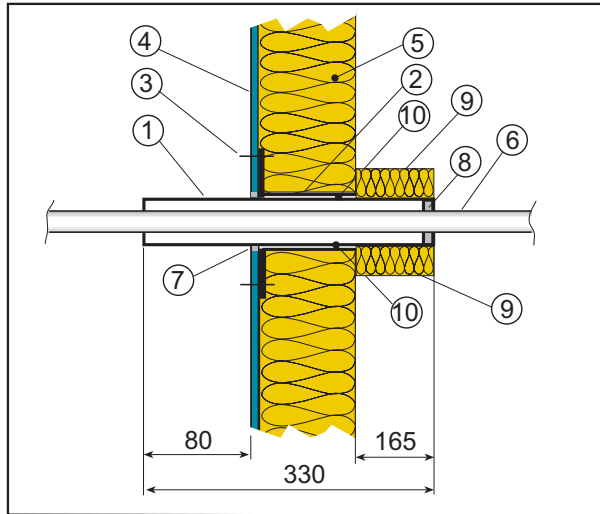
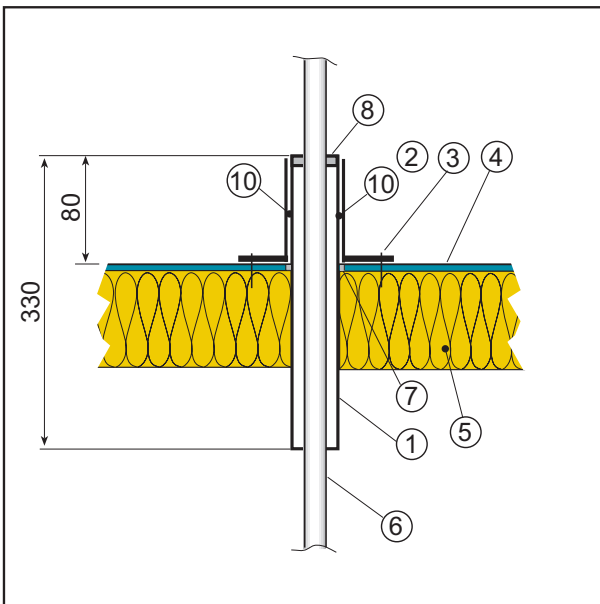


### Bulkhead penetration



### Deck penetration



#### Key:

1. Intumescent Sleeve 50 mm O.D. steel tube
2. Steel connector, 3 mm plate THK.
3. 4 Nos. 4,2 mm self tapping screw\*
4. Barrier plate\*.
5. Barrier insulation\*.
6. Penetrating Cable(s) or Plastic pipe(s)\*.
7. Marine Flex smoke seal in joint.
8. Marine Flex end seal, 7 mm THK. (nom.)
9. Insulation Paroc density 80 kg/m<sup>3</sup> 30 mm THK. or equal attached by use of  $\varnothing$  1,5 mm steel wire.
10. Apply a string of Marine Flex between the connector and Intumescent Sleeve.

\*Yard supply

## Intumescent Sleeve

### Cable and Plastic Pipe Penetration A0 - A60 Class

#### Area of use:

Intended for single and multiple cable or plastic pipe penetrations below or above the waterline.

#### Special properties:

Movements or vibrations of the penetrating cables or plastic pipes are accepted.

Simple installation - no special tools required.

Connector can be spot welded onto barrier, if required.

Change, repair or retrofits are made with ease.

Intumescent Sleeve is tested to IMO Resolution A.754 (18), IMO 2010 FTP Code Part 3.

#### Technical Data

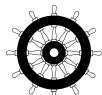
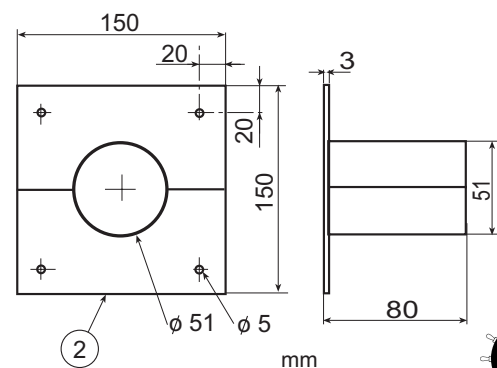
Fire rating	A0, A15, & A60 class
Internal dia.	45 mm
Sound Reduction	c. 50 dB
Resiliency	$\pm$ 1 mm, 100 Hz
Movements	$\pm$ 20% of annulus.

#### Moisture Protection

Not moisture protection of seal surface required.

#### Technical support

Contact FireSeal for specification, approval, certification or any further details



0575/2019