



## Overview

The **acre Intrusion AIC-1200 control panel** is the newest member of acre's comprehensive Intrusion portfolio designed to safeguard businesses, properties, and assets.


Ideal for light commercial use, this controller boasts 2-way wireless communication to ensure reliable interaction between the control panel and wireless detectors. Up to 65 zones, and comprehensive wireless detection, control, and indication equipment are key elements for a reliable, cost effective, and fully wireless security system.

The AIC-1200 seamlessly integrates with acre Intrusion Connect, a SaaS-based application which provides a powerful platform allowing professionals to commission, configure and manage the entire intrusion controller range from acre. Engineered for quick installation, intuitive setup, and simplified maintenance, the AIC-1200 emerges as the ideal solution for installers and service providers seeking a robust, EN Grade 2 certified, and completely wireless intrusion system. The intuitive AIC-1200 builds on previous acre Intrusion panels and keeps a similar configuration and business logic, reducing the need for extensive training.


Additionally, system owners benefit from acre's latest development, as they can take advantage of the single operating platform, the user oriented mobile app service acre Intrusion Connect, and the acre Intrusion Connect web portal. This allows users to operate multiple intrusion systems from within a single interface, regardless of which controller type is in use... increasing system confidence, reducing the need for training, and enabling a unique user experience.

### KEY NUMBERS

 100 users

 65 zones

 35 outputs

 4 keypads

 4 doors

 10 areas

## Key Features

- ✓ Full wireless intrusion panel
- ✓ Cost effective all-in-one solution
- ✓ Performant LTE-M modem onboard
- ✓ Onboard Ethernet
- ✓ Front tamper
- ✓ Easy/Fast commissioning
- ✓ EN50136 communications
- ✓ Cause & effect logic
- ✓ Access control functions
- ✓ Audio & video verification
- ✓ Multilanguage support
- ✓ acre Intrusion Connect ready
- ✓ Intuitive design reduces training needs
- ✓ EN50131 Grade 2 certified

## Applications

- ✓ Ideal for light commercial use cases
- ✓ Domestic
- ✓ Small Commercial

## TECHNICAL INFORMATION

### Controller Details

Areas	10
Max. number of wireless zones	65
Number of on-board zones	1
EOL Resistor	Dual 4k7 (default), other resistor combinations selectable
Number of on-board outputs	1 strobe (30 VDC / 1 A resistive switching current), 2 open collectors: internal bell, external bell
Max. number of Outputs	35
IP-Communication	Yes
Event Memory	1'000 intrusion events, 1'000 access events
Multilanguage Support	Multi-language support (en + 4 imported language files). Available language files: EN, GER, FR, ES, SV, NO, DA, FL, FI, CZ, NL, IT, TR
Firmware Upgrade	Local and remote upgrade for controller, peripherals and GSM/PTSN modems
Calendars	4
Cause & Effect	8 trigger / 8 logical outputs
Virtual Inputs	4
Boot Time	< 15sec

### User Credentials

Users	100
Paces	100
Access Cards	100
SMS	32
Web Passswords	50
User Profiles	100

### Connectivity

Web Server	Embedded
USB Interface	1 USB-C (PC connection)
Ethernet	1 Ethernet (RJ45) full duplex 100Mbit

### X-BUS

X-BUS Interfaces	1
X-BUS Devices max.	16
X-BUS I/O Expanders	16
X-BUS Keypads	4
X-BUS Door Expanders	2
X-BUS Output Exanders	2

## ACRE INTRUSION TOOLS

### Installer

#### Commissioning

##### Embedded Web Server / acre Intrusion Connect Pro

- Configuration tool
- Multi comms path support
- USB / Ethernet
- acre Intrusion Connect Cloud integration
- Remote access capability

#### Maintenance

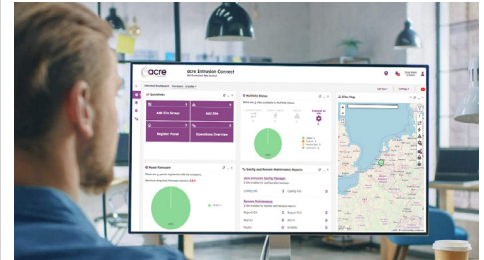
##### Embedded Web Server / acre Intrusion Connect

Cloud-based platform allowing to manage AIC-1200 panels remotely including instant and secure remote access for configuration and maintenance tasks, automated service modules to gather health status, create backups and manage users via secure and encrypted communication.

### User

#### Remote Operation

- acre Intrusion Connect Web Portal
- Mobile App
- SMS



## Access Control

Door Controllers	2 max. 4 entry doors or 2 entry/exit doors
Card Readers max.	4
Supported Card Technologies	Mifare, Classic 1k, Cotag, DESfire, EM4102, Wiegand (26 & 37 bits, HID Corp 1000)

## Two-Way-Wireless

Wireless Gateway	embedded
Wireless Keypads	4
Wireless Repeaters	4
Wireless Detectors max.	64
Wireless Output Devices max.	16
FOBs max.	64

## Transmission

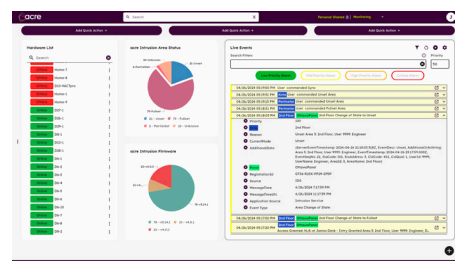
IP Dialer EDP/ FlexC	yes/yes
Internal Modem	embedded - 4G LTE-M
FlexC max. no. supported ATS	3
FlexC max. no. supported ATP	8
Event Profiles	5
Command Profiles	5
Event Exceptions	10

## Alarm Verification

Verification Zones	16 verification zones with either max. 4 IP-cameras, 8 PIRcams and 16 audio devices
IP Cameras	4
Two-Way Wireless PIRcam	16
• Video	Up to 16 pre/16 post event images (by JPEG resolution 640x480, max. 1 frame/sec.)
• Audio	Up to 60sec. pre/ 60sec. post audio recording
X-BUS Audio Expanders max. SPCV340/SPCV341/SPCV440	16
Audio Satellites max.	3 per Audio expander (maximum 48)

## Mechanical/Enviromental

Size/ Dimensions	255 x 233 x 86mm (HxWxD)
Enclosure Colour	Signal white (RAL9003)
Enclosure Material	ABS
PCB Colour	Blue
Gross Weight (kg)	1.05Kg
Net Weight (kg)	0.95Kg
Operating Temperature	-10 to +55°C
Relative Humidity	Max 93% (non-condensing)
Tamper Contact	Front spring tamper, 1 auxiliary tamper contact inputs
IP/IK Rating	IP30/IK06



## CMS/ARC

### Professional Alarm Management Manufacturers with EDP/FlexC protocol support

- AZUR SOFT
- ESI
- ENAI
- ADVANCIS

## Technology Partners

### More than 200 Integrations

- AAC
- ESI
- GENETEC
- AZUR SOFT
- LUNDIX
- MILESTONE
- QOGNIFY
- PRYSM
- ADVANCIS
- ENTELEC
- SIEMENS
- LENEL

Electrical	
Mains Voltage	230 VAC, + 10%/ -15%, 50 Hz
Current Consumptions	Standby mode ~70 mA Receive mode ~26 mA Transmit mode ~52 mA
Battery Code	YUASA NP7-12FR (12V/7Ah) - NF PowerSonic PS1270 (12V/7Ah) YUASA Yucel Y7-12FR (12V/7Ah)
Number of Batteries	1
Battery Charger	Max. 72h to 80% of battery capacity
Power Supply	Type A (per EN50131-1)
Mains Fuse	625mA slow 5x20mm (replaceable part on mains terminal block)
Battery Protection	Current limited to 3A (fuse protected), deep discharge protection at 10V DC +/- 3%

Compliance/Regulations	
Enviromental Class	Env class II - Indoor in general (e.g. sales floors, shops, restaurants, stairways, manufacturing and assembly areas, entrances and storage rooms)
CE Conformity	yes
RoHS Conformity	yes
Approval	EN50131-1 / EN50131-3 / EN50131-6, Grade 2, Class II

## ORDERING INFORMATION

Art. Nr.	Description
AIC-1200	acre Intrusion AIC-1200 Control Panel

