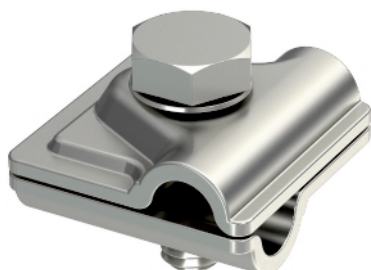


Vario quick connector



- For T, cross and parallel connectors
- Quick installation using hexagonal bolt M10 x 30, high-grade stainless steel
- Conforms to the requirements according to DIN VDE 0185-305 (IEC 62305)

Type	Fit mm	Dimension A mm	Pack. pcs	Weight kg/100 pcs.	Item No.
249 8-10 V4A	Rd 8-10	—	10	9,500	5311404

V4A Stainless steel, 316Ti / 316L

Dimensions

