

S2C-H11L

Hilfskontakt

Auxiliary contact

2CDS200936R0001

FR: 359624

IT: A648820

FI: 3210846

NO: 1630492

SE: E2012502

US: S2C-H11L



ABB



Made in Bulgaria

DE: Hilfskontakt 1 SchlieBer/1 Öffner

EN: Auxiliary contact 1NO/1NC

FR: Contact auxiliaire 1NO/1NF

IT: Contatto ausiliario 1NA/1NC

ES: Contacto auxiliar 1NA/1NC

CN: 辅助触头 GB/T 14048.5

RU: ДОПОЛНИТЕЛЬНЫЙ КОНТАКТ

MCB: S200 S200MT/S200MTR S200 P S200 MUC S300P	
10.6 lb-in 0.8 Nm	
2 x 1.5 mm ²	
0.31 in. 8 mm	
AC 14	1 A/400 V 2 A/230 V
DC 12	1 A/220 V 1.5 A/110 V
DC 13	2 A/60 V 4 A/24 V



DE: Warnung! Installation nur durch elektrotechnische Fachkraft.

EN: Warning! Installation by person with electrotechnical expertise only.

FR: Avertissement! Installation uniquement par des personnes qualifiées en électro technique.

IT: Avvertenza! Fare installare solo da un elett ricista qualificato.

ES: ¡Advertencia! La instalación deberá ser realizada únicamente por electricistas especializados.

ABB STOTZ-KONTAKT GmbH

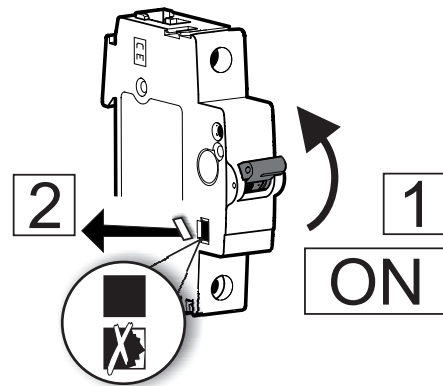
Eppelheimer Str. 82

69123 Heidelberg

Germany

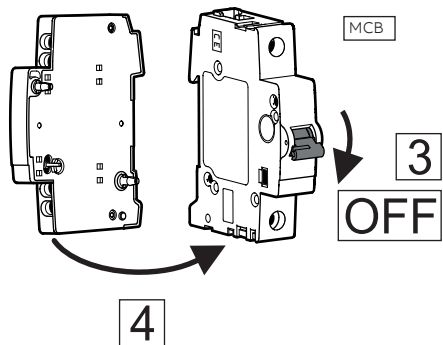
www.abb.com/lowvoltage/directives

GHS2007017P0025



max. 1x

S2C-H11L



2CDC022006F0013

2CDC022007F0013