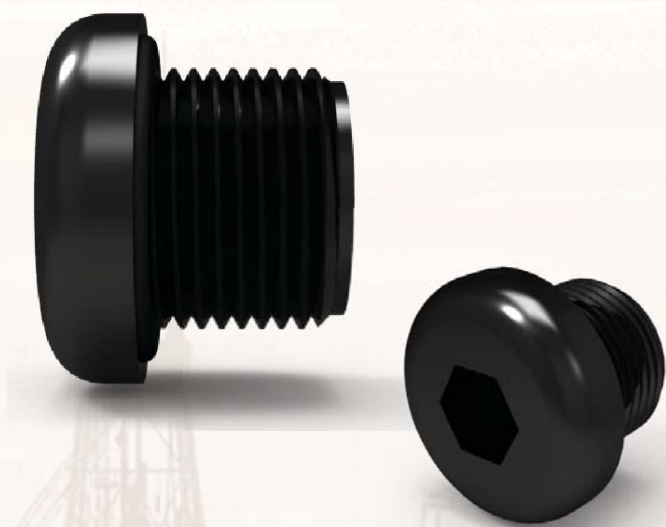


Stopping Plugs Domed Head & Hexagon Head

Increased Safety Exe
Dual Certified ATEX / IECEx

375 Domed Head Stopping Plug



Certification Details

- Increased Safety Exe IIC Gb, Extb IIIC Db, Ⓜ II 2GD.
- Certificate No's: . Baseefa12ATEX0095X and IECEx BAS 12.0065X.
- GOST R certified.
- Operating Temperature Range -60°C to +75°C.
- Group II and III.

General Information

- Manufactured in Polyamide with Nitrile O-Ring.
- M16 to M75 as standard.
- Thread length is 15mm as standard.
- Metric entry threads are 1.5mm pitch as standard.
- Suitable for use in Zone 1, Zone 2, Zone 21 and Zone 22.
- Construction and Test Standards: IEC/EN 60079-0, IEC/EN 60079-7 and IEC/EN 60079-31.
- Ingress Protection: IP66.
- Assembly Instruction Sheet: AI 410.

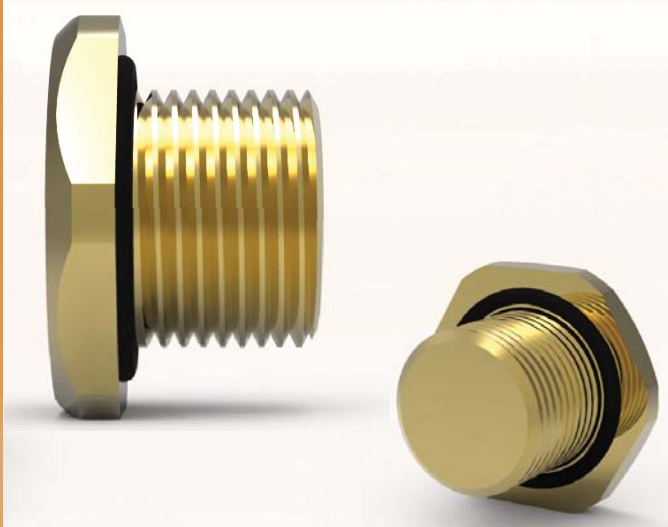
SELECTION TABLE

Thread Size	S' Dia (mm)	Allen Key (mm)
M16	23.0	8
M20	27.5	10
M25	32.0	10
M32	39.0	10
M40	49.0	10
M50	59.0	10
M63	72.0	10
M75	84.0	10

Ordering Example:

Product	Thread Size	Material	Finish
375	M32	N/A	N/A

390 Hexagon Head Stopping Plug



Certification Details

- Increased Safety Exe I Mb, Exe IIC Gb, Extb IIIC Db, Ⓜ I M2/II 2GD.
- Certificate No's: Baseefa11ATEX0157X and IECEx BAS 11.0079X.
- GOST R certified.
- Operating Temperature Range:
Nitrile 'O' Ring fitted as standard -60°C to +80°C
Silicone Option -60°C to +160°C
- Group I, II and III.

General Information

- Manufactured in Brass, Nickel Plated Brass, Steel, Nickel Plated Steel and Stainless Steel. (Aluminium for Group II use only).
- M16 to M130 as standard.
- M16 to M75 are 1.5mm pitch as standard.
- M80 to M130 are 2.0mm pitch as standard (20mm thread length)
- Other parallel thread options available on request, including BSPP, PG, ET and NPSM. NPT threads also available.
- Suitable for use in Zone 1, Zone 2, Zone 21, Zone 22 and mining applications.
- Construction and Test Standards: IEC/EN 60079-0, IEC/EN 60079-7 and IEC/EN 60079-31.
- Ingress Protection: IP66.
- Assembly Instruction Sheet: AI 412.

SELECTION TABLE

Thread Size	Length of Thread (mm)	Across Flats (mm)	Across Corners (mm)
M16	15	24	26.4
M20	15	30	32.5
M25	15	36	39.5
M32	15	46	50.5
M40	15	46	50.5
M50	15	65	66.0
M63	15	80	88.0
M75	15	95	104.5

Ordering Example: Note: When ordering metric threads larger than M75, include the thread pitch details.

Product	Thread Size	Material	Finish
390	M32	Brass	Nickel Plated