



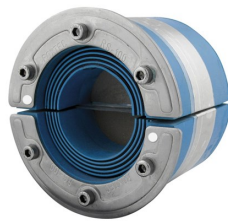
# Roxtec RS ES seal

The Roxtec RS ES is a round shielded entry seal consisting of two halves and an adaptable center with removable layers. Compression is integrated in the seal. It allows installation around an existing cable or pipe.

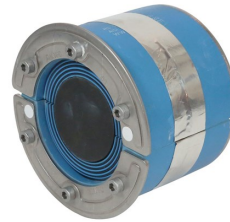
- Attachment by expansion in holes
- For one cable or pipe
- Sleeves available in versions for welding or bolting



RS 100 ES AISI 316



RS 100 ES AISI 316 woc



RS 100 ES AISI316

## With core

Product	For cable/pipe Ø (mm)	Aperture dimension Ø (mm)	Weight (kg)	Art. No
RS 25 ES AISI316	3.6 - 12	25 - 26	0.04	ERS0100251121
RS 31 ES AISI316	4 - 17	31 - 32	0.06	ERS0100311121
RS 43 ES AISI316	4 - 23	43 - 45	0.24	ERS0100431121
RS 50 ES AISI316	8 - 30	50 - 52	0.31	ERS0100501121
RS 68 ES AISI316	26 - 48	68 - 70	0.5	ERS0100681121
RS 75 ES AISI316	24 - 54	75 - 77	0.6	ERS0100751121
RS 100 ES AISI316	48 - 70	100 - 102	1	ERS0101001121
RS 125 ES AISI316	66 - 98	125 - 127	1.6	ERS0101251121

## Without core

Product	For cable/pipe Ø (mm)	Aperture dimension Ø (mm)	Weight (kg)	Art. No
RS 68 ES AISI316 WOC	26 - 48	68 - 70	0.47	ERS0000681121
RS 75 ES AISI316 WOC	24 - 54	75 - 77	0.6	ERS0000751121
RS 100 ES AISI316 WOC	48 - 70	100 - 102	0.8	ERS0001001121
RS 125 ES AISI316 WOC	66 - 98	125 - 127	1.2	ERS0001251121
RS 150 ES AISI316 WOC	93 - 119	150 - 152	1.6	ERS0001501121

