

# Wireless DIM & App set Plug-in

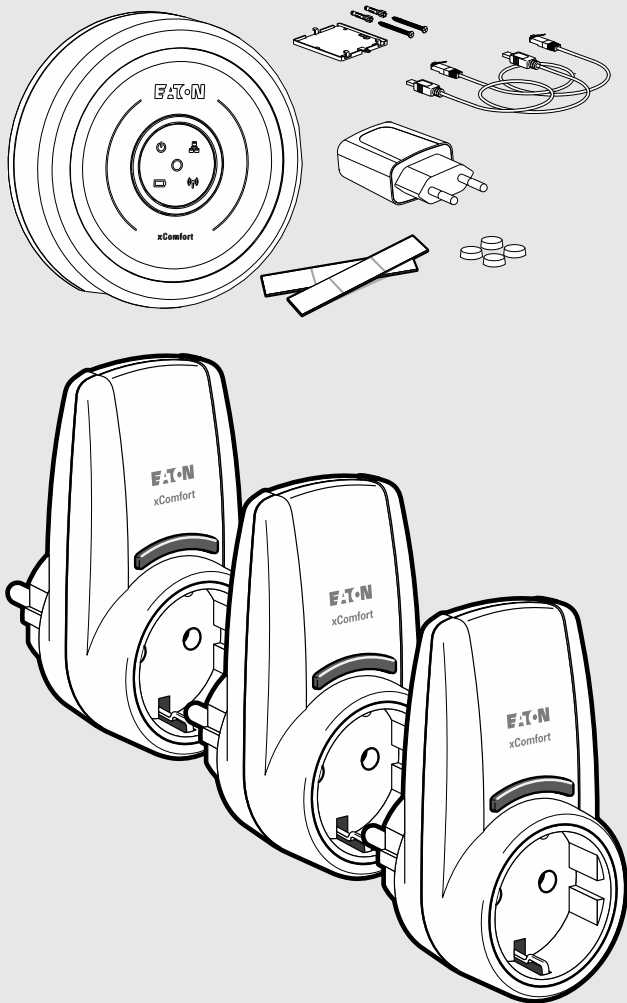


CPAD-00/222 - 300311

0 - 250W

## Quick Installation Card

Hurtig installasjon kort - Snelle installatiekaart -  
Schnellinstallationskarte - Karta pro rychlou instalaci

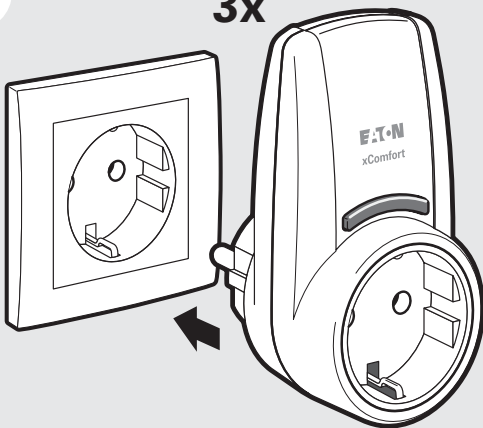


Content - Innhold - Inhoud - Inhalt - Obsah

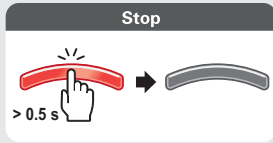
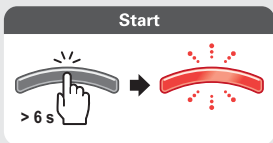


1

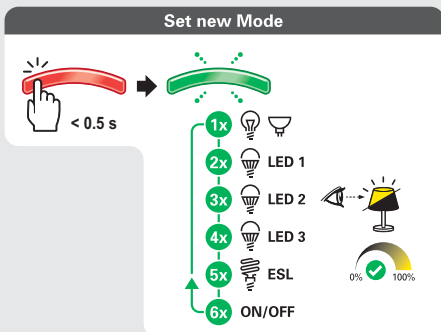
3x



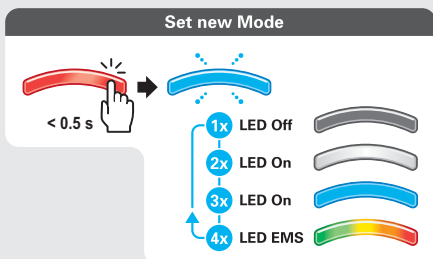
## Programming

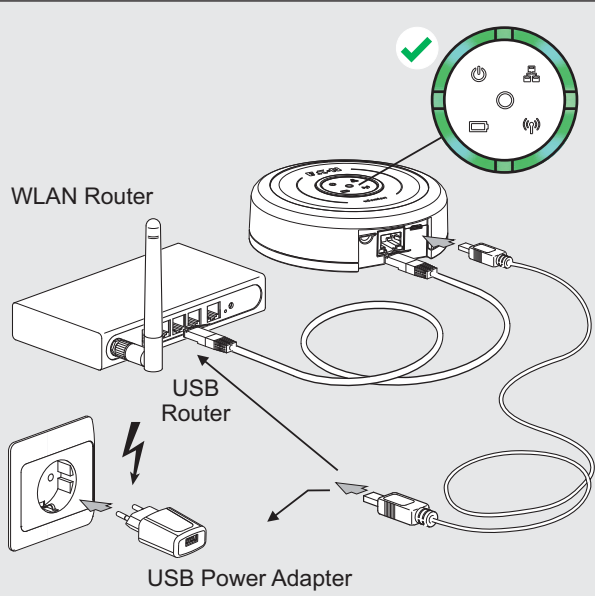
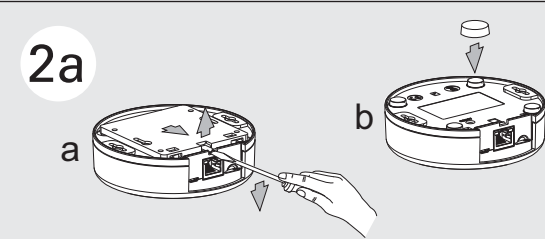
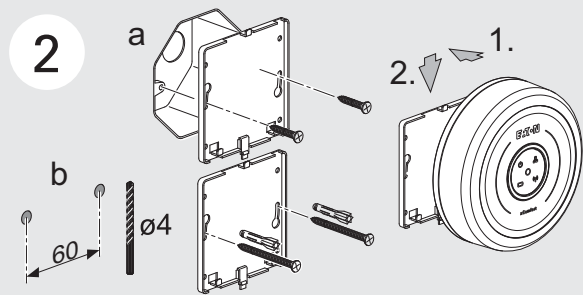
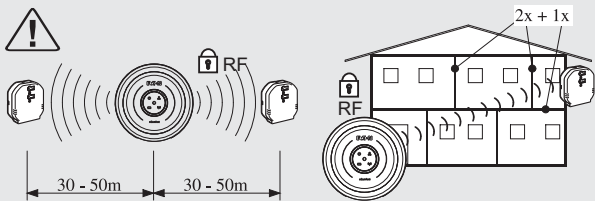


**Set Dim Profile** / Dim Profil instellen / Stille inn dimmeprofil /  
Einstellen des Dim Profil / Nastavení Dim profil

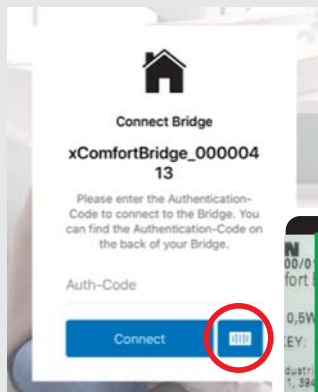
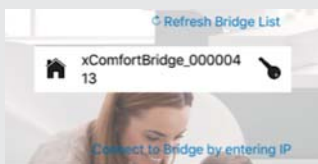


**Button behaviour** / Knopgedrag / Tastenfunktion / Knapp virkemåte /  
Funkce tlačítka





3



**EN Start App, select your xComfort Bridge and follow the Instructions. The Bridge must be in the same network!**

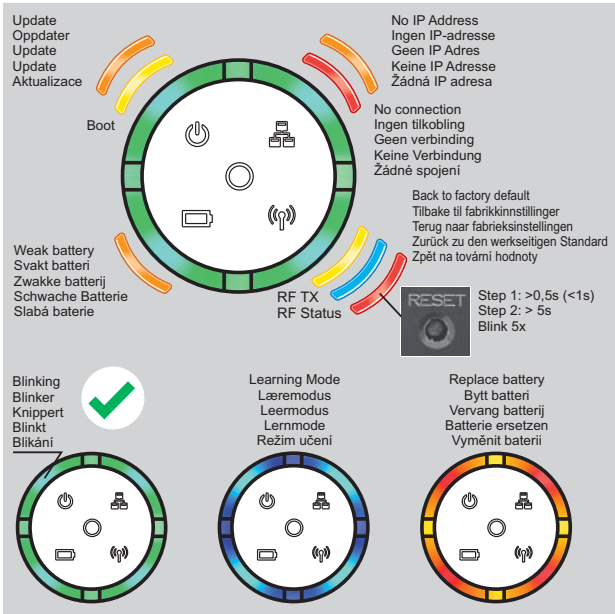
**NO** Start app, velg xComfort Bridge og følg videre instruksjer. xComfort Bridge må være i samme lokale nettverk!

**NL** Start de app, selecteer uw xComfort Bridge en volg de instructies op. De xComfort Bridge moet zich in hetzelfde netwerk bevinden!

**DE** Starten Sie die App, wählen Sie Ihre xComfort Bridge aus und folgen Sie den Anweisungen. Die Bridge muss sich im selben Netzwerk befinden!

**CZ** Spustte aplikaci, vyberte svůj xComfort Bridge a postupujte podle pokynů. Bridge musí být ve stejné síti!“





### Technical Data / Technische gegevens / Tekniske data / Technische Daten / Technická data

Power supply	230 VAC +10% -15%, 50Hz
Load	R,L,C: 0 - 250 W (0 - 100 VA); LED, ESL: 0 - 100 W (TYP)
Eaton Smart Dimming technology with overload protection	
Auto trailing / leading edge mode	6 DIM Profiles
Max RF power	25 mW (ERP)
Standby	Aktor: 280 mW (TYP) / Bridge: <0.5 W
RF	868,3MHz (xComfort compatible)
Degree of protection	IP20
Actor	-5 to +55°C
Sensor	+5 to +45°C

