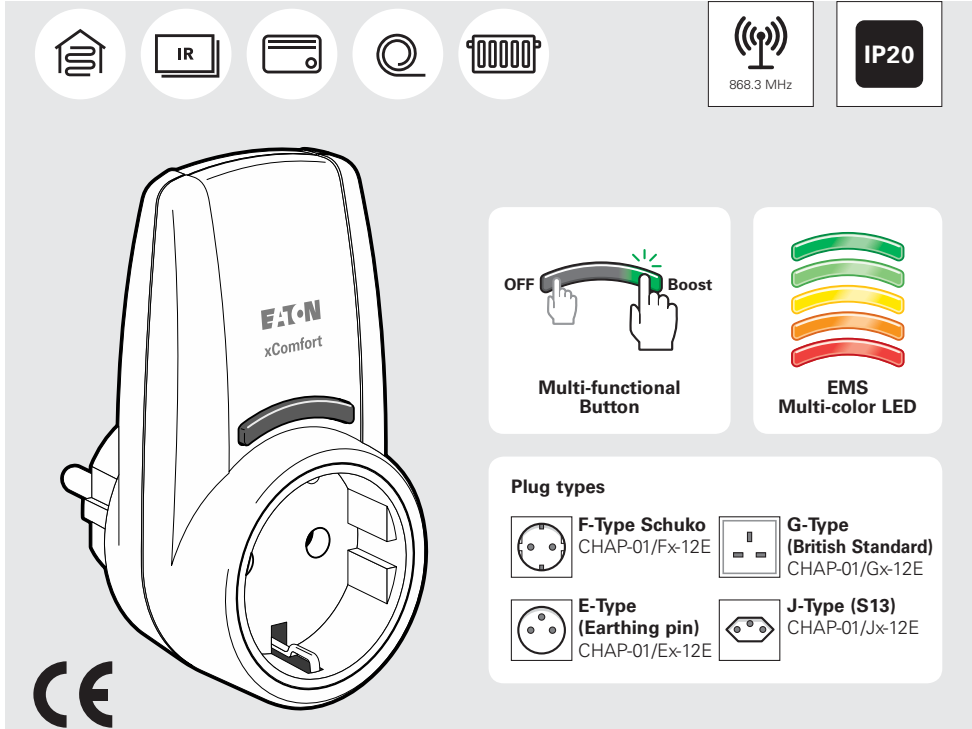
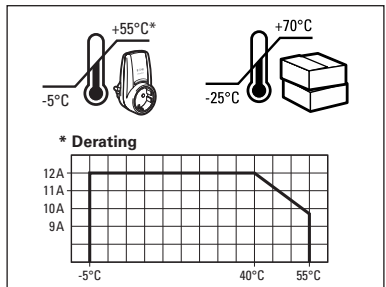


## Heating Plug 230 VAC / 12 A CHAP-01/xx-12E



### Technical Data / Technische gegevens / Tekniske data / Technische Daten / Technická data

Power supply	230 VAC +10% -15%, 50 Hz
Power standby	190mW (TYP)
Load	RLC, 12A (at 40°C, Derating*)
Technology	Eaton Patented Hybrid Zero-cross
Switching lifetime	5×10 <sup>7</sup> (TYP)
Inrush current	500A@200us, 300A@1ms, 200A@3ms (TYP)
EMS	3W to 2760W, 5% (>3W)
RF	868,3MHz (xComfort compatible)
Button Operation	On / Off / Boost
Button LED	Multi-Color EMS power consumption
Profiles	5 PWM Heating Profiles
Dimensions	100.3 x 52 x 56.9 mm (H x W x D)

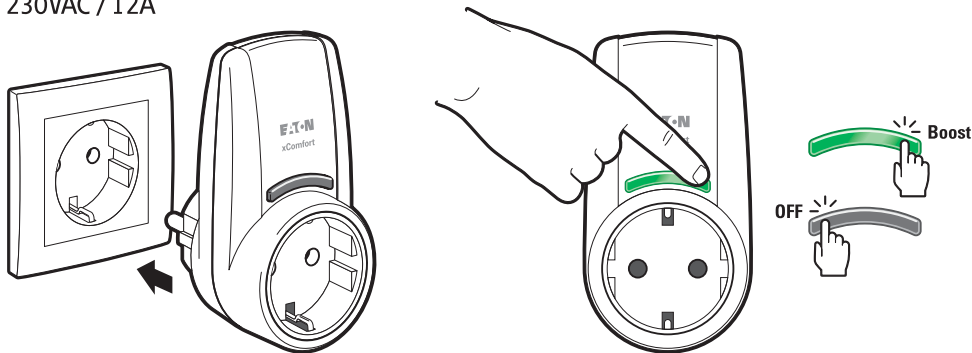


<b>MRF</b>	Version 2.60
<b>RM</b>	Version V41c
<b>SHC-RF</b>	Version 2.21
<b>ECL-RF</b>	Version 2.01
<b>USB-RF</b>	Version 2.10

# Heating Plug

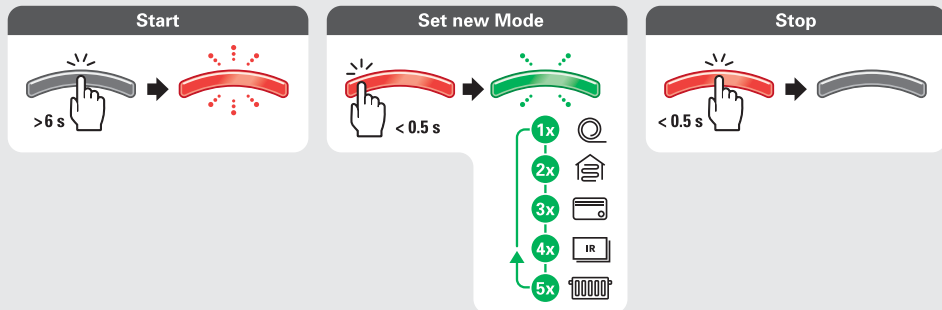
230VAC / 12A

## Operation

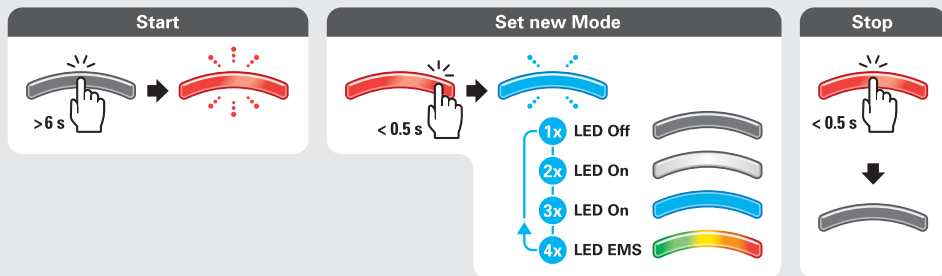


## Programming

**Set Heating Profile** / Verwarmingsprofiel instellen / Stille inn varmeprofil / Einstellen des Heizprofil / Nastavení topného profilu



**Button behaviour** / Knopgedrag / Tastenfunktion / Knapp virkemåte / Funkce tlačítka



**Notification** / Notificatie / Benachrichtigung / Melding / Zpráva



# Button indication

## LED Off Mode

(Off)



## LED On Mode

(white)



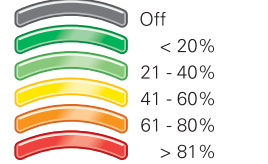
## LED On Mode

(blue)



## LED EMS Mode

(multi-color)



## Actuator Off



## Load error



## Overload



## Emergency



**Assign Sensor in Basic Mode / Sensor in Basic Mode toewijzen / Tilknytte i Basic Mode / Zuweisen im Basic Mode / Přřadit v základním režimu**

Start	Assign	Stop
<p>&gt;6 s</p>	<p>flashing / blinker / knippert blinkt / blikání</p> <p>&gt;7 s      1x ^</p> <p>2x</p>	<p>&lt; 0.5 s</p>

**Remove Sensor in Basic Mode / Sensor in Basic Mode verwijderen / Fjerne i Basic Mode / Im Basic Mode löschen / Odstranit v základním režimu**

Start	Remove	Stop
<p>&gt;6 s</p>	<p>flashing / blinker / knippert blinkt / blikání</p> <p>&gt;7 s      1x ^</p> <p>5x</p>	<p>&lt; 0.5 s</p>

**Back to factory default / Terug naar fabrieksinstellingen / Tilbake til fabrikkinnstillinger / Zurück zu den werkseitigen Standard / Zpět na tovární hodnoty**

Start	Reset
<p>&gt;6 s</p>	<p>&gt;5 s      5x</p>



# Declaration of Conformity

We, EATON Industries (Austria) GmbH  
3943 Schrems, Eugenia 1  
Austria

declare under our sole responsibility as the manufacturer that the product (family)

## Eaton - Plug in adapter - heating, CHAP-01/xx-12E

(the declaration of conformity applies to all listed types within our actual product catalogue)

provided that it is installed, maintained and used in the application intended for, with respect to the relevant manufacturers instructions, installation standards and "good engineering practices"

complies with the provisions of Council directive(s):

- RED Directive 2014/53/EU
- RoHS Directive 2011/65/EU

based on compliance with following standard(s):

- EN 300 220-2 V3.1.1, EN 300 489-1 V1.9.2, EN 301 489-1 V2.1.0, EN 301 489-3 V1.6.1, EN 301 489-3 V2.1.1, EN 50491-5-1:2010, EN 50491-5-2:2010, EN 60669-2-5:2017, EN 50581:2012



EU- type examination performed by:  
TÜV Austria Services GmbH, Notified Body  
1230 Vienna, Deutschstrasse 10, Austria

Affixing date of CE mark: 2018  
Doc.id.: CHAP-01xx-12E\_270718

Fernando Ceccarelli

Senior Vice President  
General Manager

27.07.2018

Friedrich Schröder

Director Quality  
& Systems