



AS-i branch M12

Part no. ZB2-100-AZ1
 Article no. 082667
 Catalog No. ZB2-100-AZ1

Delivery program

Product range		AS-Interface connection and sensors
Subrange		AS-Interface link
Basic function		M12 connection socket for AS-Interface connection cable
Description		IDC termination
For use with		
For use with		RAMO RASP

Technical data

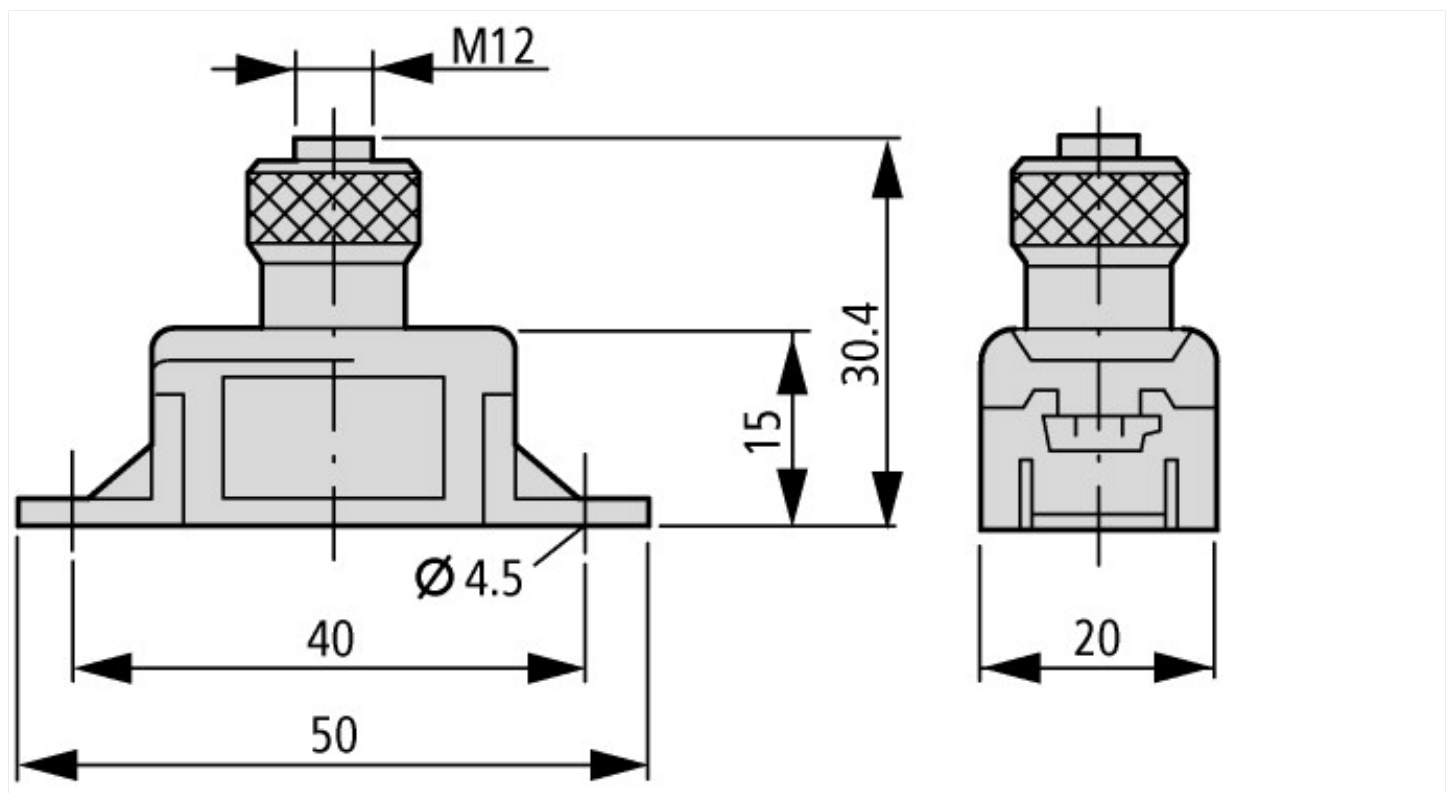
General

Degree of Protection		IP67
Ambient temperature, storage	°C	-40 - 85
Weight	kg	0.04

Design verification as per IEC/EN 61439

Technical data for design verification		
Operating ambient temperature min.	°C	0
Operating ambient temperature max.	°C	70

Dimensions



Additional product information (links)

AWA2700-1534 AS-Interface coupling module FK, FK-E	
AWA2700-1534 AS-Interface coupling module FK, FK-E	ftp://ftp.moeller.net/DOCUMENTATION/AWA_INSTRUCTIONS/15341096.pdf
AWB2190-1430 Rapid Link Switching and Installation System	
AWB2190-1430 Schalt- und Installationssystem Rapid Link - Deutsch	ftp://ftp.moeller.net/DOCUMENTATION/AWB_MANUALS/h1430de.pdf
AWB2190-1430 Rapid Link Switching and Installation System - English	ftp://ftp.moeller.net/DOCUMENTATION/AWB_MANUALS/h1430g.pdf

