

# FDV

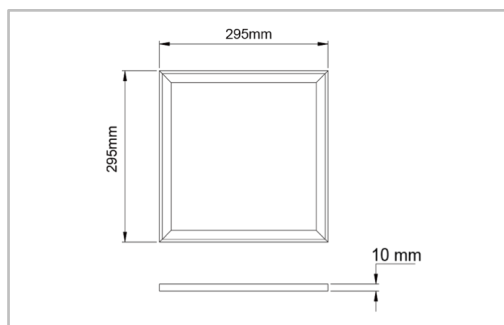
## LED Panel SE Premium 20W 300x300

El nr	32 765 78
Article nr	111814
EAN	7090015379973



### Lysteknikk

Type lyskilde	LED (Runlite SMD LED)
Spenning	230VAC 50/60Hz
Watt	18W
Systemeffekt (W)	20W
Effektiv lysstrøm (lm)	2400 lm
Effekt	120 lm/W
Fargetemperatur	4000K
Fargegjengivelse (CRI)	Ra85
MacAdams faktor	SDCM<3
Levetid	70000 L80
Lysspredning	120°



### Dimmetype

Type	Faseavsnitt
------	-------------

### Beskyttelse

Isolasjonsklasse	Klasse II
IP-grad	IP40

### Materialer og overflater

Armaturhus	Metallramme og bakplate
Farge	Matt hvit (RAL 9003)
Optikk	PC
LGP	3mm (Mitsubishi)

### Energi og godkjenning

Energi klasse	A-AA+
Godkjenning	CE
Safety standard (TUV)	EN 60598-1:2015, EN 60598-2-2:2012, EN 62471:2008, EN 62493:2015 AfPS GS 2014:01 Par. 3.1

### Montering/Tilkobling

Montering	Innfelling
Kabling	1,5m ledning med Euro plugg

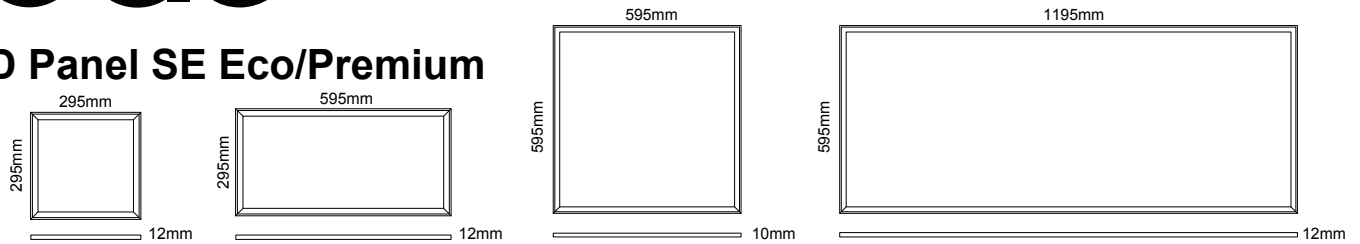
### Dimensjoner (mm)

Lengde (L)	295 mm
Bredde (W)	295 mm
Høyde (H)	10 mm
Vekt	1,00 kgs

### Forpakning

Eske dimensjon	380x380x43 mm
Eske Vekt	1,15 kgs
Kartong Dimensjon	420x420x250 mm
Antall/Kartong	5 stk
Kartong Vekt	6,80 kgs

## LED Panel SE Eco/Premium



### IMPORTANT INFORMATION:

1. Please read this instruction carefully before installation and keep it for future reference.
2. Please conform to the instruction of equipment and installed by professional.
3. Make sure correct voltage applied before use and keep away from heat and vibration source.
4. The light source of this luminaire is not replaceable. When the light source reaches its end of life the whole luminaire shall be replaced.
5. For indoor use only.

#### Please note:

Available Mounting Hardware (not included-purchase separately)

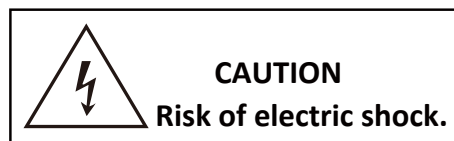
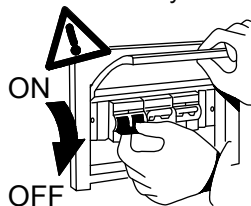
- 100014 Festebrakett / Ceiling Bracket for surface mounting
- 100024 Ramme for utenpåliggende montering / Mounting frame for surface mounting (595x595)
- 100224 Ramme FIX for utenpåliggende montering/Mounting Frame for surface mounting (595x595)
- 100044 Ramme for utenpåliggende montering / Mounting frame for surface mounting (595x295)
- 110014 Wireoppheng / Wire kit for suspended mounting

### MAIN PARAMETER:

Product	123604	111804	111814	112704	107214	127214
Rated voltage	180-240Vac 50/60Hz	180-240Vac 50/60Hz	180-240Vac 50/60Hz	180-240Vac 50/60Hz	180-240Vac 50/60Hz	180-240Vac 50/60Hz
LED Rated power	36W	18W	18W	27W	50W	50W
System power	38W	20W	20W	30W	54W	54W
LED	SMD 2835	SMD 2835	SMD 2835	SMD 2835	SMD 2835	SMD 2835
LED Driver	Constant Current 950mA	Constant Current 420mA	Constant Current 420mA	Constant Current 700mA	Constant Current 1350mA	Constant Current 1350mA
Color Temperature	3000K	3000K	4000K	3000K	3000K	4000K
Protection	CLASS II	CLASS II	CLASS II	CLASS II	CLASS II	CLASS II
Beam Angle	120°	120°	120°	120°	120°	120°
Operation Temperature	-20°C~50°C	-20°C~50°C	-20°C~50°C	-20°C~50°C	-20°C~50°C	-20°C~50°C
Product size	595x595x10mm	295x295x10mm	295x295x10mm	595x295x10mm	1195x595x10mm	1195x595x10mm
Weight	4,0kg	1,4kg	1,4kg	2,9kg	8,0kg	8,0kg

### INSTALLATION INSTRUCTIONS:

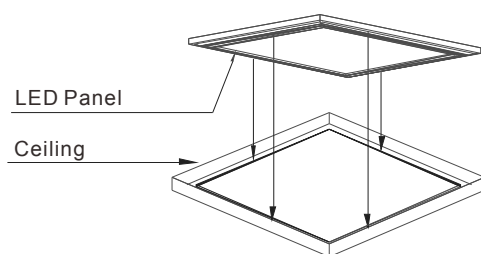
1. Always switch off the power supply before installation.
2. Make sure all parts are ready when open the box and prepare the installation tools the lighting needs.
3. Should be installed by qualified electricians.
4. If there is any damage on the housing or glass cover, should view it as disqualified product that cannot be used.



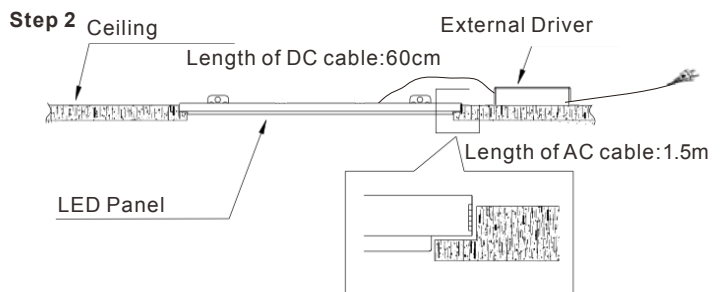
### INSTALLATION STEPS:

#### A. Built-in Type

Step 1

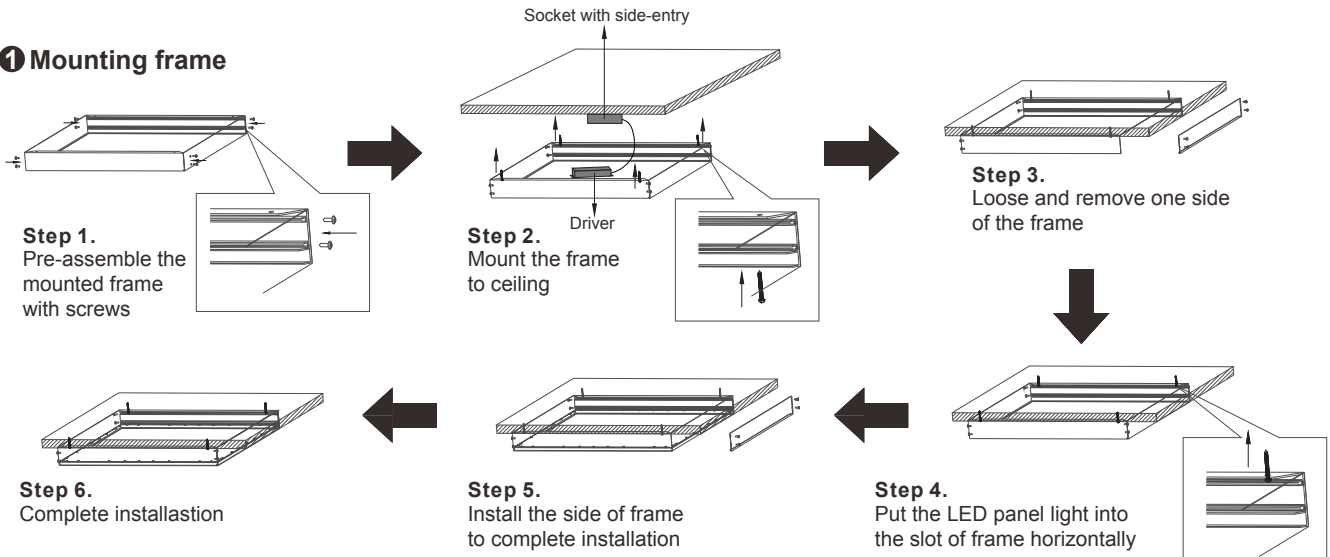


Step 2

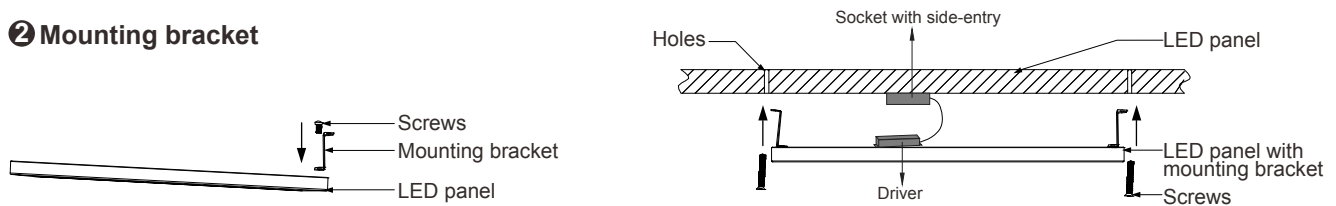


## B. Mounted Type

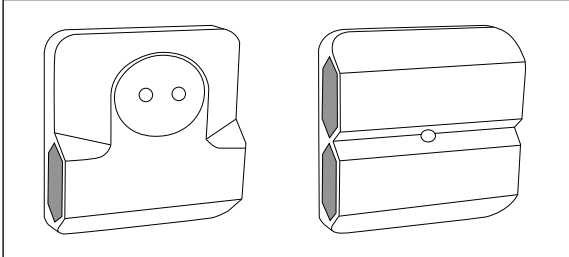
### 1 Mounting frame



### 2 Mounting bracket



Following sockets are recommended to use when installing with mounting frame or mounting bracket.  
El. nr. 15 021 72 2xEuro and 1xShcuko  
El. nr. 15 021 84 4xEuro



## C. Suspended Type

