

Data sheet

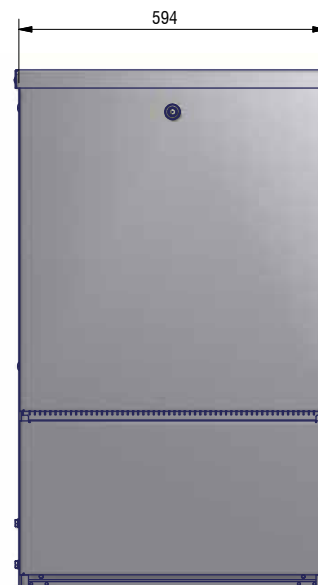
Communication Cabinets | Multipurpose Cabinets | Climate Control Cabinets | Cable Distribution Cabinets | Accessories

SCC enclosures for communication networks

The Triax SCC series with integrated roof is a range of outdoor enclosures in eight sizes. It's designed for use as an access point in copper-based, fibre optic (e.g. FTTx) or similar communication networks.



Type SCC 462
"Hammar" marking system



Type SCC 594
"Stockholm" locking system

Technical Specifications:

- Cabinet material – high-quality, low carbon galvanised steel for long life
- Wall thickness – 2.0 mm steel sheet giving a robust structure
- Surface treatment – polyester coated for an attractive and well-protected finish
- Lock system - triangular lock or Stockholm
- Integrated fixing bar – for cables, fibre, guide tubes & micro-ducts etc.
- Built-in louvres – roof-mounted for natural ventilation of equipment
- Protective circuit - prepared for installation of a suitable electrical protective circuit

Features:

- Large lift-off door - gives the operator easy access to the entire installation in one operation.
- Optional ventilated door - for increased airflow and heat dissipation.
- Enclosure height above ground level is 850 mm with burial installation of 710 mm
- Comprehensive range of accessories makes it possible to create individual solutions based on standard products with brick system, different backboards, cable management etc.

Approvals:

- Enclosures according to EN 62208, EN 60439-1, EN 60439-5
- IP34D according to EN 60529
- IK 10 according to EN 62262

Doors

All cabinets have lift-off doors, also available with louvres for increased ventilation. The door can easily be removed for easy access during installation and maintenance.

Heat Dissipation

The SCC series is designed as an adaptable solution where the door can be selected to suit the actual thermal demands of the equipment installed, giving an optimal environment on all installation sites. The heat dissipation capability of the cabinet is based on calculations according to IEC 890 for stand-alone cabinets with Δt at 30 K.

To avoid “hot spots” it’s recommended that equipment should be distributed evenly inside the cabinet to ensure adequate ventilation. Heat dissipation issues can often be resolved by selecting a larger cabinet in the range, which will ensure better air circulation and thus ventilation.

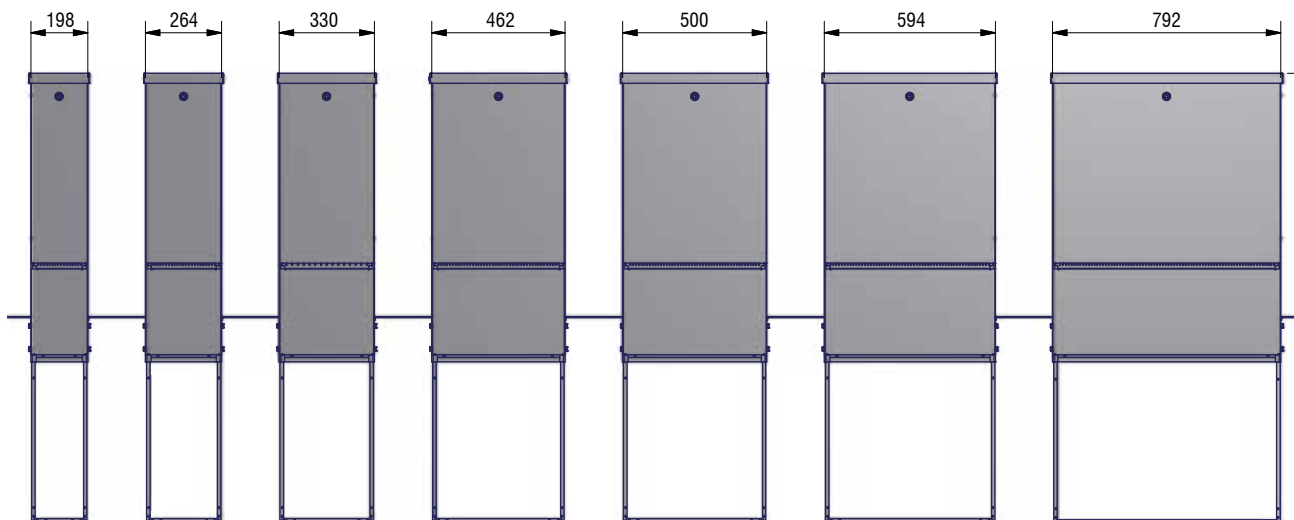
Lock Protection

The lift-off doors are prepared for EMKA/Stockholm locking systems. For additional information about other locking systems, please see the SCC series accessories list.

Root Assembly

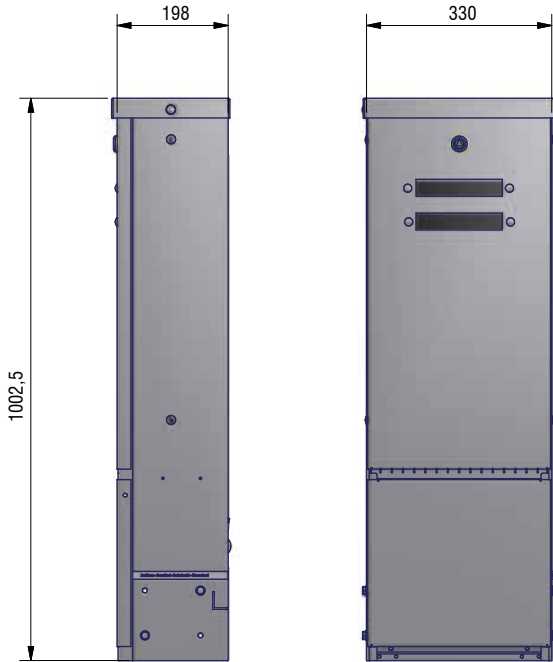
The SCC Series is provided with a step-extendable integrated root. The extended root makes it possible to increase the height above ground of the cabinet from normally 700 mm up to 850 mm with buried installation of 710 mm.

An extra strain relief bar can be mounted in the root for additional fixing of the cables. For more information, please see the SCC series accessories list.



Type	SCC 198-198	SCC 264-198	SCC 330-198	SCC 462-198	SCC 500-250	SCC 594-198	SCC 594-300	SCC 792-300
Colour	RAL 7037	RAL 7037	RAL 7037	RAL 7037	RAL 7037	RAL 7037	RAL 7037	RAL 7037
Overall Dimensions								
Height above ground (mm)	850	850	850	850	850	850	850	850
Width (mm)	198	264	330	462	500	594	594	792
Depth (mm)	198	198	198	198	250	198	300	300
Total height with long root (mm)	1560	1560	1560	1560	1560	1560	1560	1560
Door type	Lift-off	Lift-off	Lift-off	Lift-off	Lift-off	Lift-off	Lift-off	Lift-off
Insulation of roof	Incl.	Incl.	Incl.	Incl.	Incl.	Incl.	Incl.	Incl.
Compartments	1	1	1	1	1	1	1	1
Earthing point	Yes	Yes	Yes	Yes	Yes	Yes	Yes	Yes
In-ground root adjustable	Incl.	Incl.	Incl.	Incl.	Incl.	Incl.	Incl.	Incl.
Locking system	Single cam	Single cam	Single cam	Single cam	Single cam	Single cam	Single cam	Single cam
Strain relief bar in root	Incl.	Incl.	Incl.	Incl.	Incl.	Incl.	Incl.	Incl.
Snow marking	Prepared	Prepared	Prepared	Prepared	Prepared	Prepared	Prepared	Prepared
Packing	Carton box	Carton box	Carton box	Carton box	Carton box	Carton box	Carton box	Carton box
Weight (kg)	22	24	28	34	38	40	48	66
Pieces per pallet	15	15	10	10	4	5	4	2

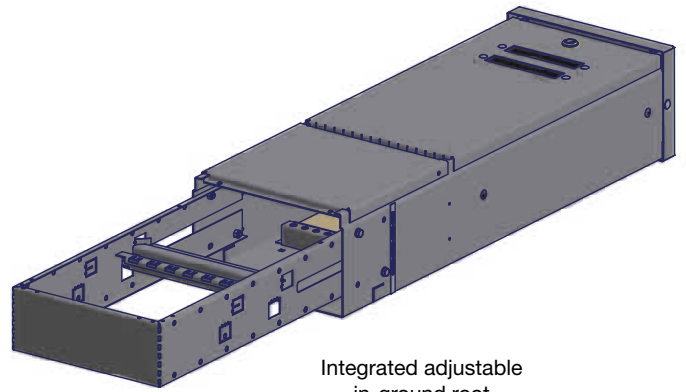
Solutions with “Hammar” marking system and triangular lock



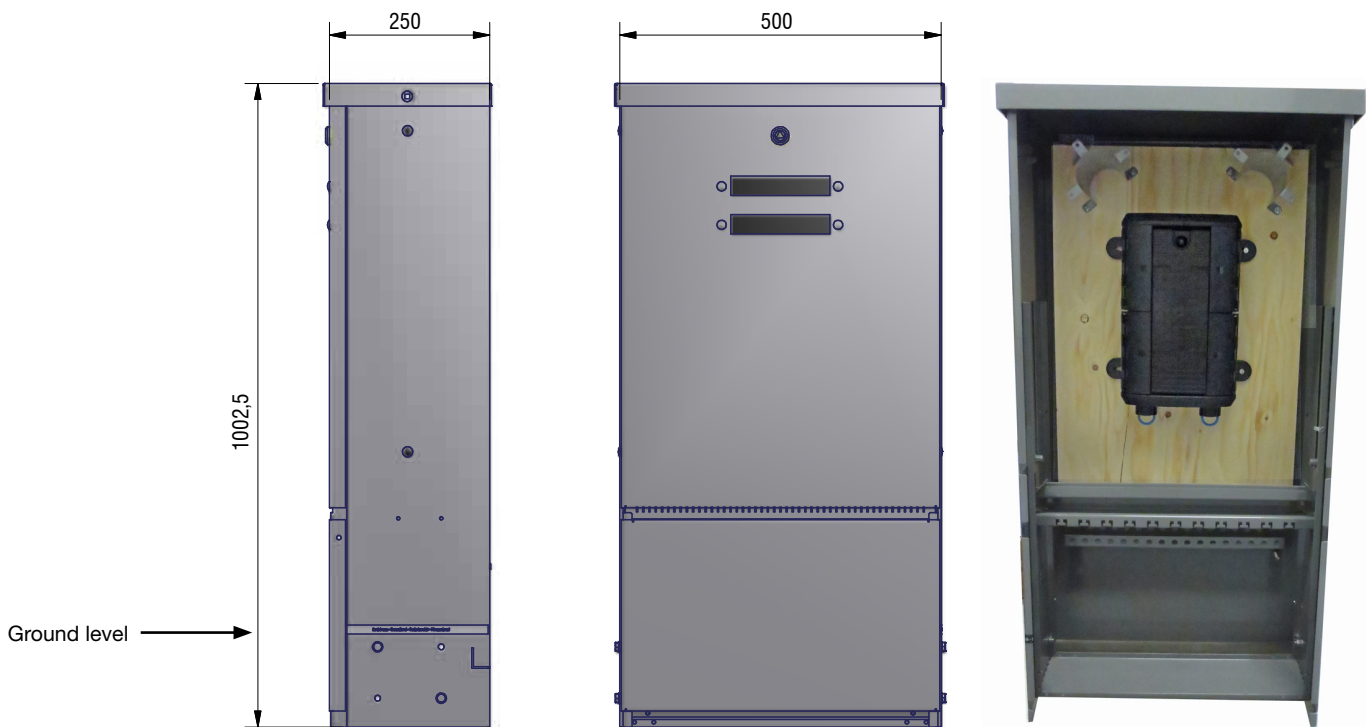
Type SCC 330-198
“Hammar” marking system



Triangular locking system

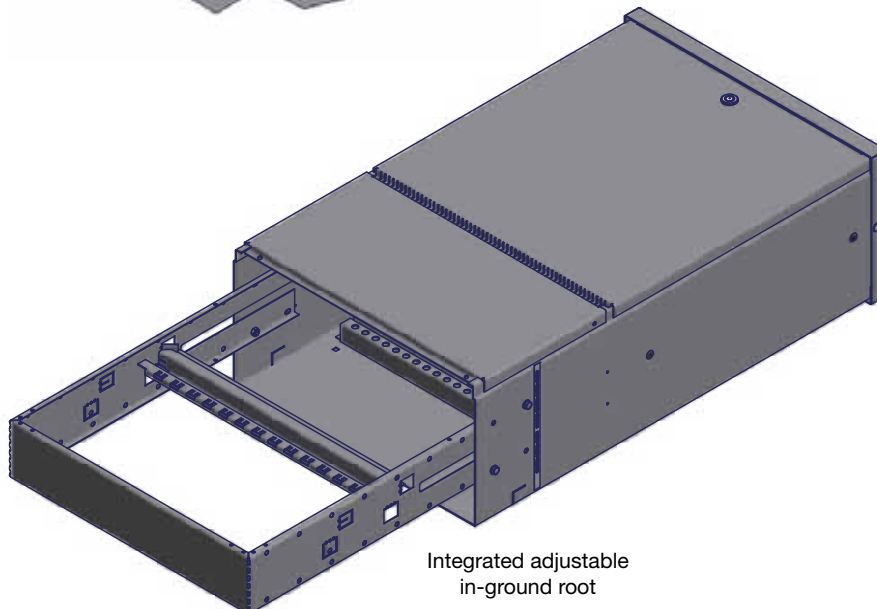
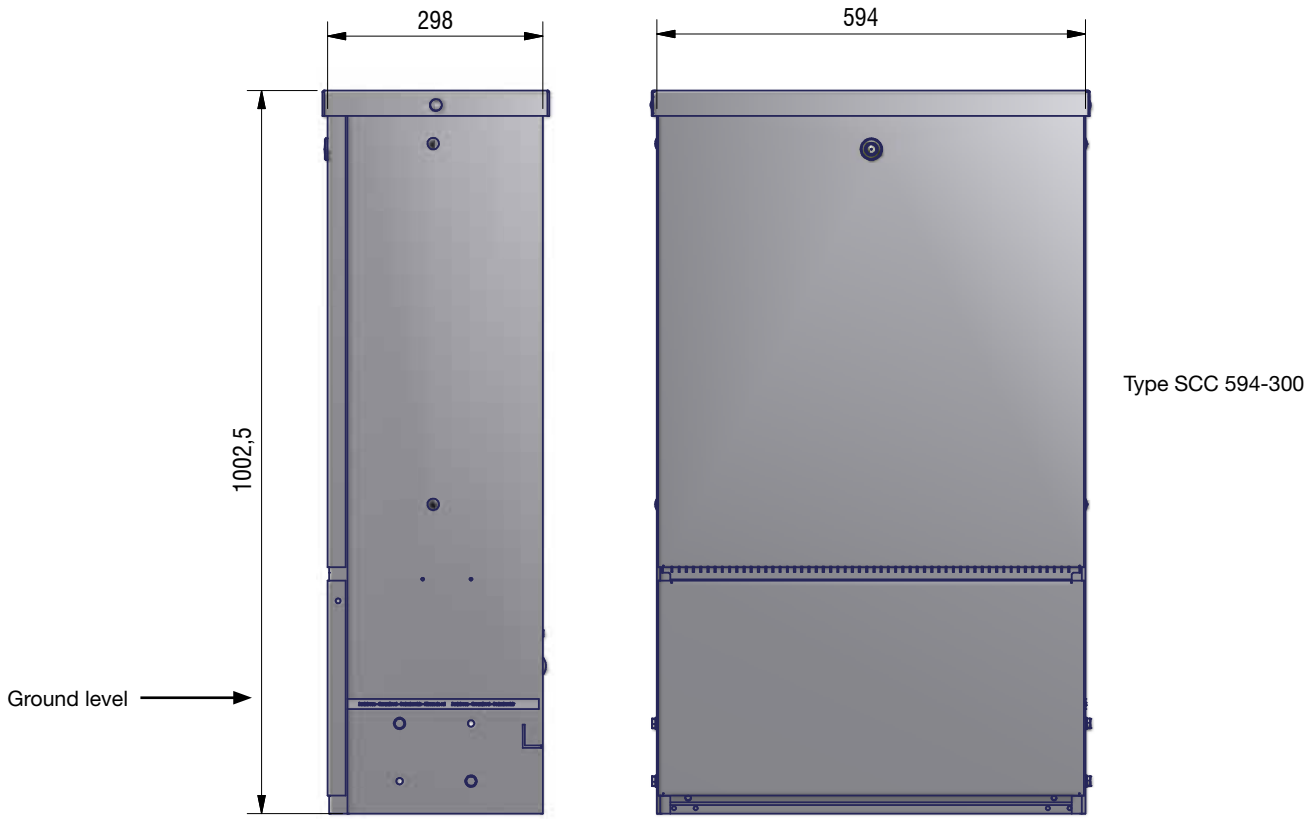


Integrated adjustable
in-ground root



Type SCC 500-250
“Hammar” marking system

Solutions with "Stockholm" locking system

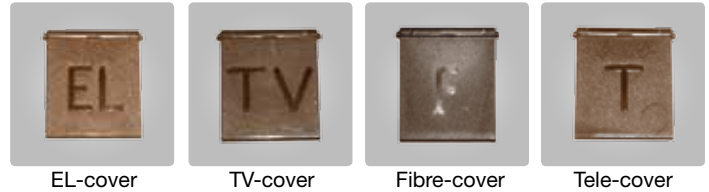


Different accessories

Description ¹
Doors
Lift-off door with louvres for plastic housing
Lift-off door with louvres for triangular locking system
Lift-off door prepared for tear-drop protection
Reinforced lift-off door for arctic environment available for all types
Locks in plastic housing
Triangular lock set
Ruko 205 lock
Ruko 207 lock
Different lock covers for plastic housing
Lock sets (lock and latch) for triangular locking systems
Different locks
Other parts
Condensation block
Filter for louvres
Insulation for roof - avoids condensation to drip on to vital equipment
Strain relief bar in the roof

¹Please contact Triax for other options

Locks and covers for plastic housing



EL-cover

TV-cover

Fibre-cover

Tele-cover



Ruko 205, 207 lock

Triangular lock

Lock sets

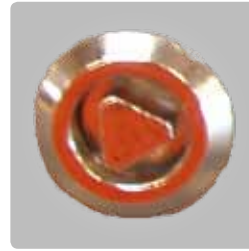


Lock



Latch

Standard

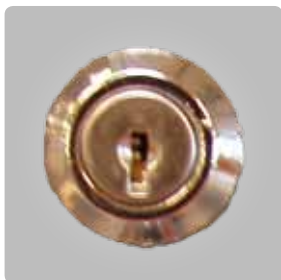


Triangular Lock

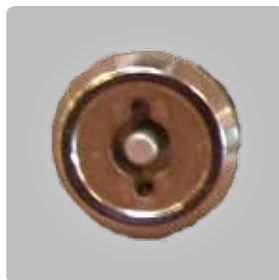


Stockholm Lock

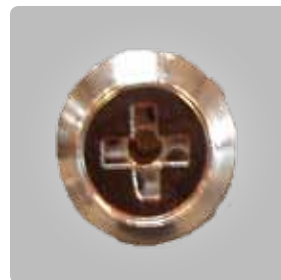
Other types



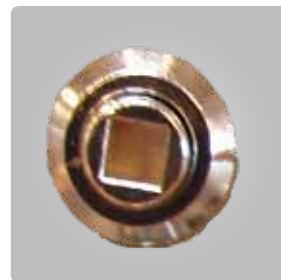
C101 Lock



Security Lock

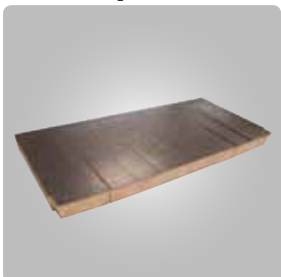


Fiat 1000-U4 Lock



8 mm Square Lock

Other parts



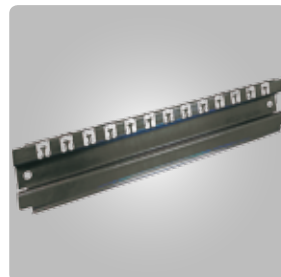
Condensation block - made of 50 mm foam material



Insulation for roof



Filter for louvres in the lift-off doors



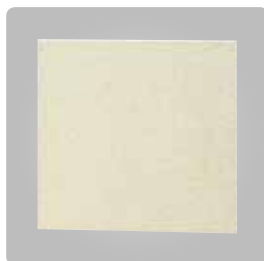
Strain relief bar in the roof Reversible with T-cuts for strips or for cable clamps

Backboards

Type	SCC 198-198	SCC 264-198	SCC 330-198	SCC 462-198	SCC 500-250	SCC 594-198/300	SCC 792-300
Backboards							
Moisture-resistant plywood	252310	252311	252312	252314	252510	252315	252316
Height (mm)	700	700	700	700	700	700	700
Width (mm)	160	220	285	420	458	550	690
Depth (mm)	18	18	18	18	18	18	18
Moisture-resistant chipboard	252008	252018	252028	252048	252003	252058	252068
Height (mm)	700	700	700	700	700	700	700
Width (mm)	160	220	285	420	458	550	690
Depth (mm)	16	16	16	16	16	16	16
Rialet	-	252343	252344	252345	-	252346	252347
Height (mm)	-	700	700	700	-	700	700
Width (mm)	-	220	285	420	-	550	690
Depth (mm)	-	19	19	19	-	19	19
Galvanised steel board 1.5 mm	252318	252324	252325	252327	-	252328	252329
Height (mm)	700	700	700	700	-	700	700
Width (mm)	160	220	285	420	-	550	690
Depth (mm)	18	18	18	18	-	18	18
Aluminium (incl. earthing kit)	-	251815	251806	-	-	251827	251833
Height (mm)	-	700	700	-	-	700	700
Width (mm)	-	220	285	-	-	550	690
Depth (mm)	-	18	18	-	-	18	18



Moisture-resistant plywood



Moisture-resistant chipboard



Rialet

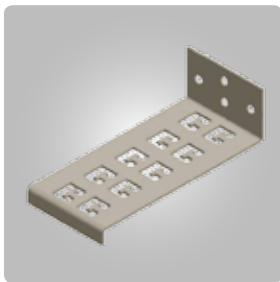


Galvanised steel board

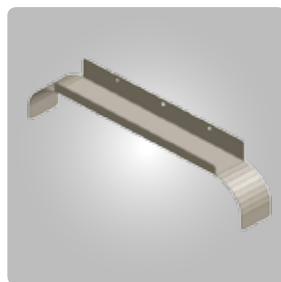


Aluminium board

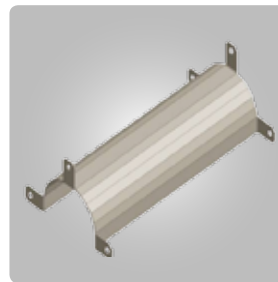
Description	Type	Pieces per pack	Part number
Cable organiser for 5 cables	CO-5C	1	252199
Cable bracket - W320 x D60mm	CB-320	1	252499
Cable bracket - W440 x D60mm	CB-440	1	252498
Radius limiter - D140mm	RL-140	4	252190
Radius limiter - D225mm	RL-225	4	252191
Cable clamps (steel)			
Cable clamps	BF 18-22	20	546122
Cable clamps	BF 22-26	20	546126
Cable clamps	BF 26-30	20	546130
Cable clamps	BF 30-34	20	546134
Cable clamps	BF 34-38	20	546138
Cable clamps	BF 38-42	20	546142
Cable clamps	BF 42-46	20	546146
Cable clamps	BF 46-50	20	546150
Cable clamps	BF 50-54	20	546154
Cable clamps	BF 54-58	20	546158
Cable clamps	BF 58-64	20	546164
Cable clamps	BF 70-76	20	546176



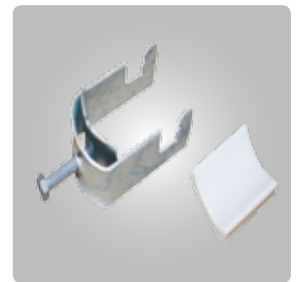
Cable organiser



Cable bracket



Radius limiter



Cable clamps

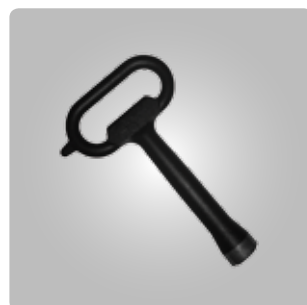
Connection kits and keys

Description	Type	Pieces per pack	Partnumber
Multi-cabinet connection kit ¹ - Grey (RAL 7037)	CSA	10	251886
Triangular key	TN1	1	848610
Triangular keys	TN1	25	225926

¹River bushes are required for attachment



Connection kit



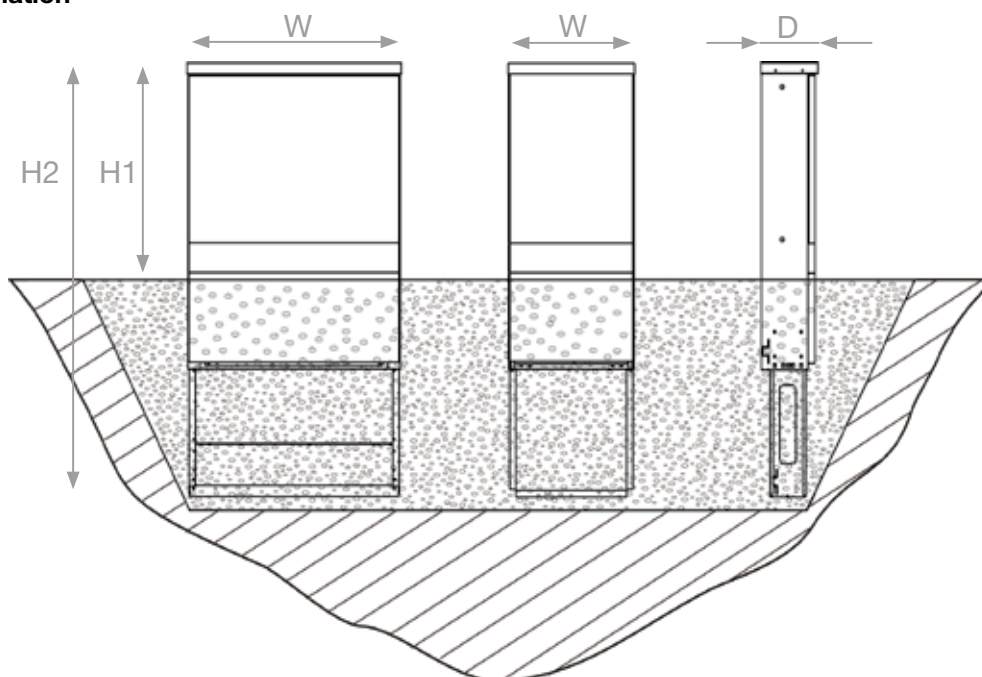
Triangular key



Lift-off door with louvres and plastic housing

SCC installation guide

In-ground installation



Correct installation
(Illustration)

In-ground installation

In order to optimise lifetime the enclosure must be buried in pure sand (i.e. without clay content) so that water drains away effectively.

To ensure sufficient drainage, Triax recommends a minimum layer of 300 mm sand surrounding the enclosure in the ground. Care must also be taken on installation to avoid galvanic corrosion.

The sides of the enclosure are provided with marking tape with the text "Ground level". We recommend burial of the plinth so that the marking tape is up to 50 mm above the finished ground level as the terrain may change over time and cover i.e. the louvres.

Type	SCC 198-198	SCC 264-198	SCC 330-198	SCC 462-198	SCC 500-250	SCC 594-198/300	SCC 792-300
Overall dimensions							
H1 - Height above ground (mm)	700/850	700/850	700/850	700/850	700/850	700/850	700/850
W - Width (mm)	198	264	330	462	500	594	792
D - Depth (mm)	198	198	198	198	250	300	300
H2 - Total height (mm)	1400/1560	1400/1560	1400/1560	1400/1560	1400/1560	1400/1560	1400/1560
Mounting volume							
Hight (mm)	700	700	700	700	700	700	700
Width (mm)	160	220	285	420	458	550	690
Debth (mm)	171	171	171	171	221	271	271