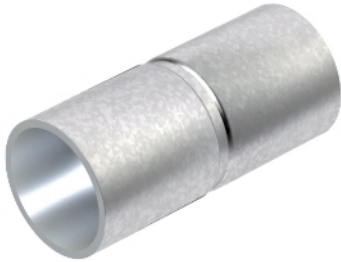


Hot-dip galvanised steel sleeve, without thread



Accessory part: plug-in sleeve for the connections between electrical installation pipes.
With burr-free inner wall.



Type	Dimension D mm	Dimension d mm	Dimension L mm	Dimension l mm	Dimension t mm	Pack. pcs	Weight kg/100 pcs.	Item No.
SV16W FT	18,6	16,6	50	25	1	25	2,200	2046620
SV20W FT	23,1	20,7	60	30	1,2	50	3,200	2046621
SV25W FT	28,1	25,7	60	30	1,2	50	5,600	2046622
SV32W FT	35,2	32,8	70	35	1,2	50	7,800	2046623
SV40W FT	43,8	40,8	80	40	1,5	25	14,400	2046624
SV50W FT	54	51	100	50	1,5	10	22,000	2046625
SV63W FT	67	63	100	50	1,5	5	28,000	2046626

FT Hot-dip galvanised

Dimensions

