

wall mounting appliance inlet - without closure cap



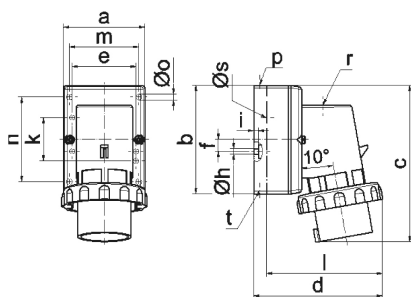
| Product description | |
|-------------------------------|----------------------------------|
| BALS-Prd.-Nr | 24020 |
| EAN | 4024941240208 |
| product category (PG) | GT wall mounting appliance inlet |
| current (A) | 32A |
| number of poles (P99) | 3p |
| number of poles (P) | 2P+PE |
| position of earth contact (H) | 6 h |
| voltage (V) | 200 up to 250V |
| frequency (HZ) | 50 and 60Hz |

| Product description | |
|-----------------------------|--|
| protection degree (SA) | IP67 |
| colour code 1 (KF1) | blue RAL 5015 |
| Colour of appliance | Collar blue, Bayonet ring grey, Housing bottom grey, Housing top grey |
| connection design (AT) | screw terminal |
| maximum conductor size (LQ) | 6,0 qmm |
| cable entry (KE) | top entry M25 |
| Height | 138mm |
| Width | 94mm |
| Depth | 123mm |
| dimension of enclosure (GG) | 75x90 mm (HxW) |
| material of enclosure (GM) | Polyamide |
| contact | The contact carrier is made of polyamide, the contacts are brass nickel plated |

| Additional technical information | |
|----------------------------------|--|
| | The cable entry is one at top open and one rear sided closed |

| Logistics data | |
|----------------|------------------|
| Weight/pcs | 0.306 kg / Piece |
| Packaging | Bag |
| Content amount | 1 ST |
| EAN | 4024941240208 |

| Logistics data | |
|----------------|---------------|
| Length | 123 mm |
| Width | 94 mm |
| Height | 138 mm |
| Weight | 0.307 kg |
| Volume | 1,595.556 ccm |
| Packaging | Carton |
| Content amount | 10 ST |
| EAN | 4024941970174 |
| Length | 330 mm |
| Width | 216 mm |
| Height | 260 mm |
| Weight | 3.286 kg |
| Volume | 17,062.5 ccm |



5 MB 128

| Ampere | 16 | 16 | 16 | 32 | 32 | 32 |
|---------|---------|---------|-------|-------|-------|-------|
| Polzahl | 3 | 4 | 5 | 3 | 4 | 5 |
| a | 64,0 | 75,0 | 84,0 | 90,0 | 90,0 | 90,0 |
| b | 87,0 | 100,0 | 84,0 | 75,0 | 75,0 | 75,0 |
| c | 137,0 | 151,0 | 136,0 | 138,0 | 138,0 | 139,0 |
| d | 112,0 | 119,0 | - | 122,0 | 122,0 | 123,0 |
| e | 51,0 | 59,0 | - | - | - | - |
| f | - | 11,0 | - | - | - | - |
| h ø | 4,1 | 5,1 | - | - | - | - |
| i | 4,5 | 4,5 | - | - | - | - |
| k | 40,0 | - | - | - | - | - |
| l | - | - | 111,0 | - | - | - |
| m | - | - | 64,0 | 78,0 | 78,0 | 78,0 |
| n | - | - | 64,0 | 45,0 | 45,0 | 45,0 |
| o ø | - | - | 5,5 | 5,5 | 5,5 | 5,5 |
| p | M20 | M20 | - | - | - | - |
| r | - | - | M20 | M25 | M25 | M25 |
| s ø | - | - | 23,0 | 29,0 | 29,0 | 29,0 |
| t | für M20 | für M20 | - | - | - | - |