

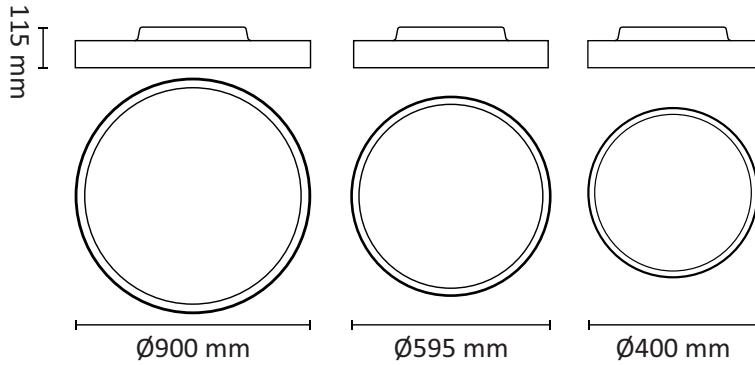
MORE 2

EN: MEASUREMENT

NO: MÅL

SE: MÅTT

FI: MITAT



EN: This product contains a light source of energy efficiency class E

NO: Dette produktet inneholder en LED-lyskilde med energieffektivitets-klasse E

SE: Denna produkt innehåller en ljuskälla med energieffektivitetsklassen E

FI: Tämä tuote sisältää LED-valonlähteen energiatehokkuus luokalla E



EN: Unreplaceable light source.

Replaceable control gear by qualified electrician.

NO: Ikke utskiftbar lyskilde.

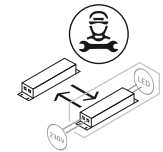
Forkobling kan byttes av autorisert el.installatør.

SE: Ej utbyttbar ljuskälla.

Drivdon kan bytas av auktoriserad elektriker.

FI: Ei vaihdettava valonlähde.

Valtuutettu sähköasentaja voi vaihtaa käyttölaitteet.



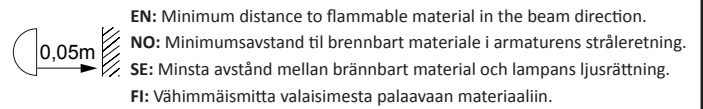
EN: Installation must be performed by a professional.

OBS!

NO: Må installeres av autorisert el-installatør.

SE: Måste installeras av en behörig elektriker.

FI: Vain valtuutettu sähköasentaja saa asentaa.



EN: Minimum distance to flammable material in the beam direction.

NO: Minimumsavstand til brennbart materiale i armaturens stråleretning.

SE: Minsta avstånd mellan brännbart material och lampans ljusrättning.

FI: Vähimmäismita valaisimesta palaavaan materiaaliin.

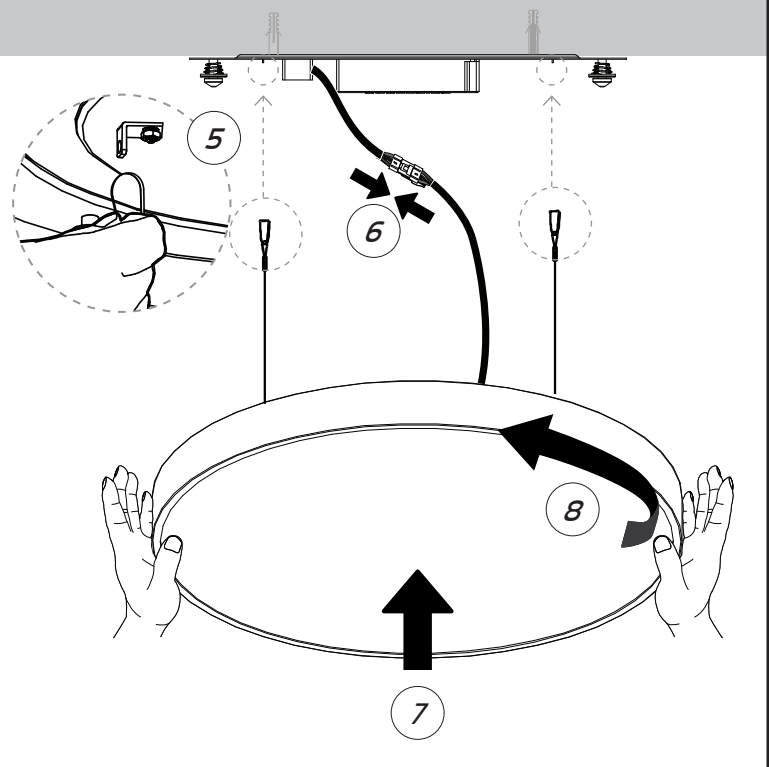
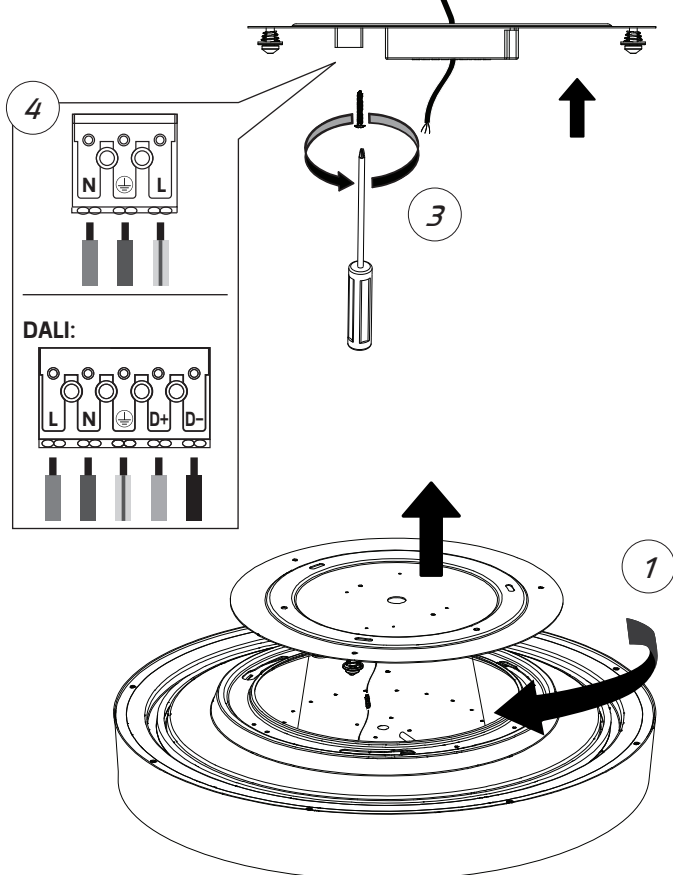
A

EN: SURFACE MOUNTING

NO: OVERFLATEMONTERING

SE: YTMONTERING

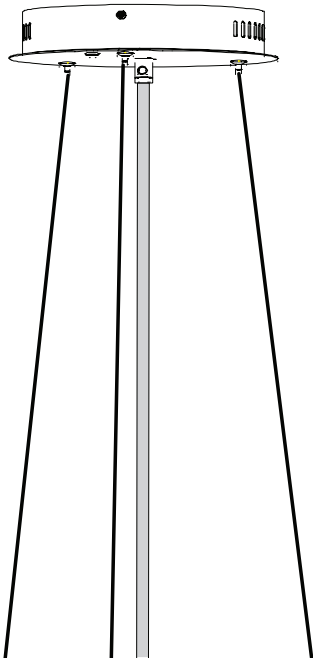
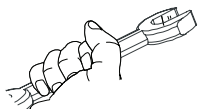
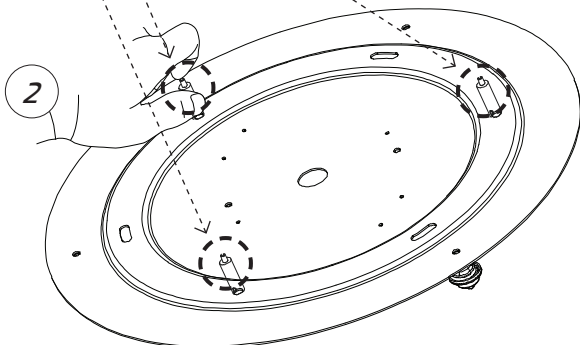
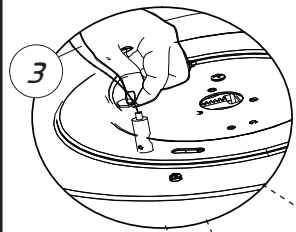
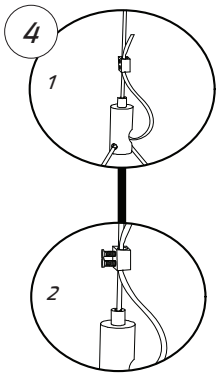
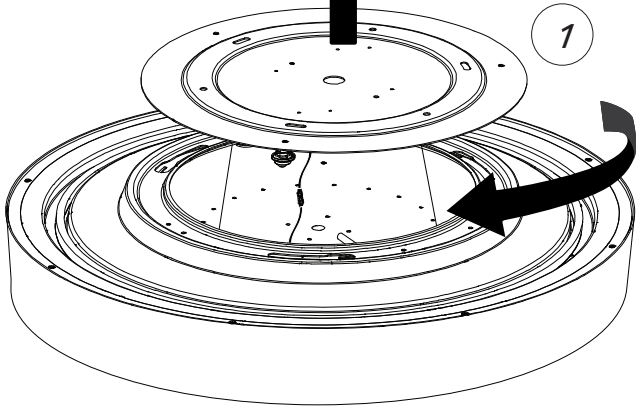
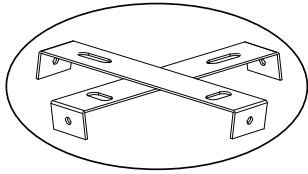
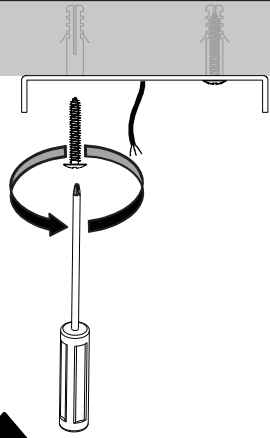
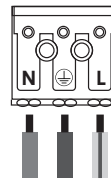
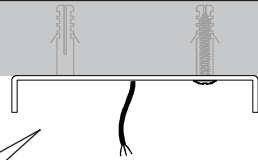
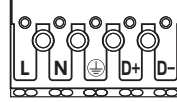
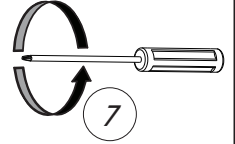
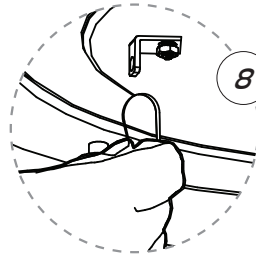
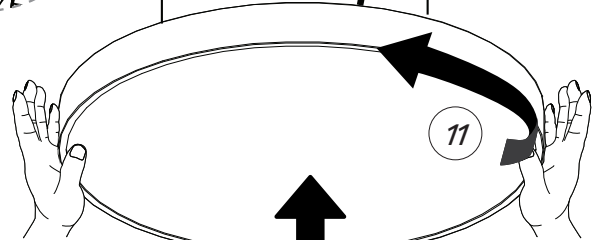
FI: PINTA-ASENNUS



A

B

EN: WIRE SUSPENSION
 NO: WIRE OPPHENG
 SE: WIREUPPHÄNG
 SE: VAJERIRIPUSTUS

**5****DALI:****6****7****9****11****10****B**