

# RF Module

**RadioLINK®** Communication Capability

## Model Ei 605MRF

- RF upgrade for Ei605C Optical Smoke Alarm
- Simple plug in modular design
- Interconnect up to 12 *RadioLink* alarms
- Transmits, receives & repeats RF data.
- House Coding confines communication to selected *RadioLink* devices.
- Powered by Ei605C 9V Battery
- Manufactured in Ireland to ISO 9001:2000
- 5 year Guarantee



### Product Description

The Ei605MRF is an optional add-on *RadioLink* module for the Ei605C Optical Smoke Alarm.

The optional *RadioLINK* module simply plugs into the back of the Ei605C allowing wireless interconnection of up to 12 *RadioLink* ready alarms.

The Ei605MRF module is powered by the Ei605C 9V battery.

The house code feature confines RF communication to selected *RadioLink* devices, avoiding activation of neighbouring alarm systems.

### Technical Specification

<b>Sensor:</b>	Works in conjunction with the Ei605C optical smoke alarm
<b>Interconnect:</b>	Up to 12 <i>RadioLink</i> devices may be interconnected
<b>Supply Voltage:</b>	Power is supplied by the 9V battery on the attached Ei605C smoke alarm.

### Operation

Fitting the Ei605MRF module to an Ei605C smoke alarm will make it a *RadioLink* enabled device.

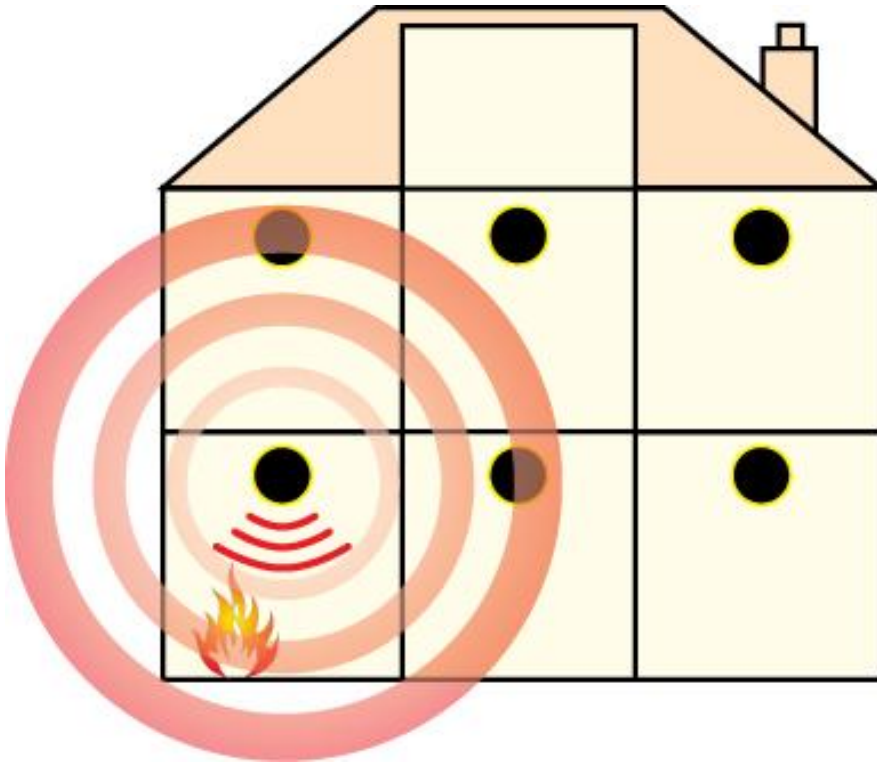
When the Ei605C detects smoke the Ei605MRF module will transmit RF data to all other *RadioLink* devices with the same house code, sounding all the alarms in the system.

On receiving RF data from other *RadioLink* devices the Ei605MRF will alert the attached Ei605C smoke alarm and sound the horn.

<b>Frequency:</b>	868MHz band (1% duty cycle)
<b>Temperature Range:</b>	0 to 40°C
<b>Humidity Range:</b>	15% to 95% Relative Humidity – non condensing
<b>Warranty:</b>	5 year (limited) warranty
<b>Approvals:</b>	The Ei605C and Ei605MRF assembly is approved to VdS G208016

Specifications are subject to change

## Model Ei605MRF



**Ei605MRF module transmits, receives and repeats  
RF data to other *RadioLink* enabled devices**



**Ei605MRF module  
plugs into rear of  
Ei605C**