

## Fiber Access Terminal for Aerial Air Blown Fiber Installations

NCD 507 2000



Fully equipped cabinet with additional splice trays and micro cable strain reliefs (ordered separately)

### Features

- Support for blown fiber, micro cables and traditional cables
- Up to 64 microducts for blown fibers
- Up to 4 aerial micro cables\*
- Up to 144 fiber splices\*\*
- Mid-span storage
- Durable aluzinc sheet steel
- For pole or wall mounting

\* Requires additional strain relief kit (optional accessories)

\*\*Requires additional splice trays (optional accessories)

### Application

This Fiber Access Terminal (FAT) is designed for splicing of air blown fibers and micro cables in aerial installations. The closure is typically used as a pole mounted distribution point in Fiber To The Home networks.

### Design

The FAT consists of a well ventilated outer protective cabinet and an inner cable management section with splice trays. Cables are held in place with dynamic strain reliefs that allow natural cable movement present in aerial air blown installations. Duct holders secure the mounting of microducts for air blown fiber installations.

The cabinet is delivered with two splice trays and two dynamic strain reliefs for micro cables. Each tray handles up to 36 single splices. The capacity can easily be increased by adding two additional splice trays or additional strain reliefs (optional accessories).



## Fiber Access Terminal for Aerial Air Blown Fiber Installations

### Typical Data

#### Material

The outer cabinet is made of polyester painted aluzinc coated sheet steel. The color is RAL 7037 dark grey.

#### Cable and Duct Entrances

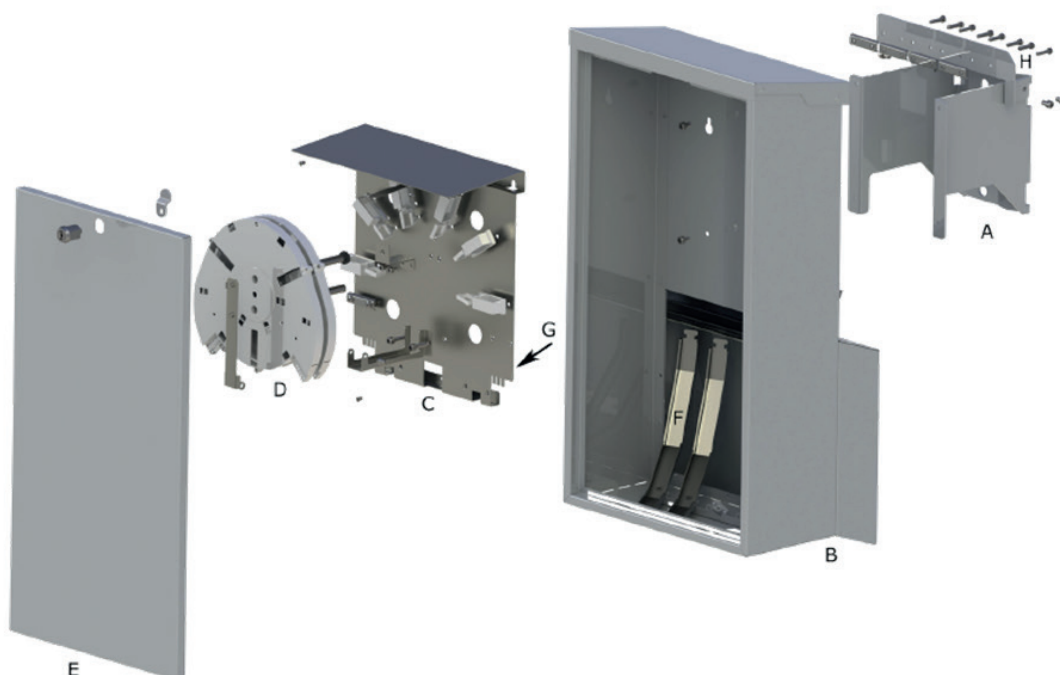
Cable and duct entrances are available from top and bottom. Each entrance has 4 inlets for cables and ducts with up to 40 mm diameter and 8 inlets for up to 18 mm diameter. Four of the 18 mm inlets can be used for midspan access.

#### Size and weight

Weight ..... 17 kg

Dimensions..... 650x340x170 mm

A	Pole mount
B	Closure with cable entrances
C	Mounting plate with fiber guides and microduct holders
D	Splice trays
E	Door with keyless lock
F	Micro cable strain relief
G	Alternative strain relief
H	Attachment clamp for aerial duct suspension rod



### Ordering Information

#### Basic cabinet

PRODUCT NUMBER	TYPE
NCD 507 2000	Complete Cabinet including: <ul style="list-style-type: none"> <li>- 2 x Splice trays</li> <li>- 2 x Micro cable dynamic strain relief</li> <li>- Holders for 64 microducts</li> <li>- 2x French bolts for wooden pole mounting</li> </ul>

#### Accessories

PRODUCT NUMBER	ACCESSORIES / SPARE PARTS
NBL 504 506	Splice trays, pack of two
NTB 101 091*	Strain relief kit for aerial micro cable, pack of two
LSD 347 05*	Wire crimp tool