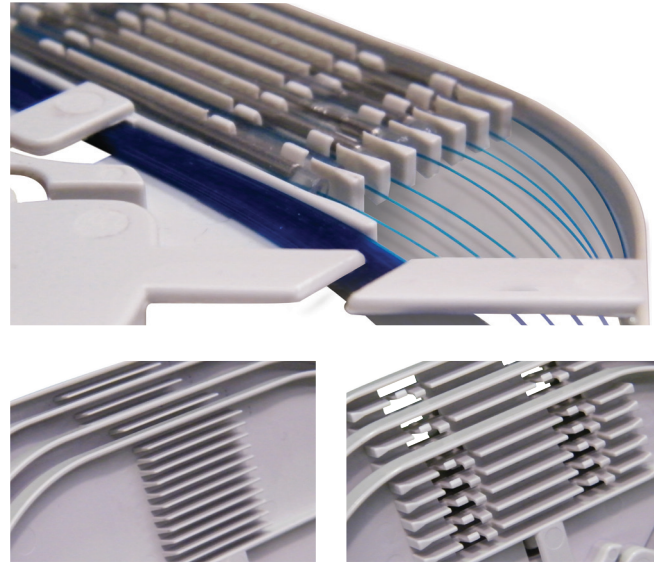
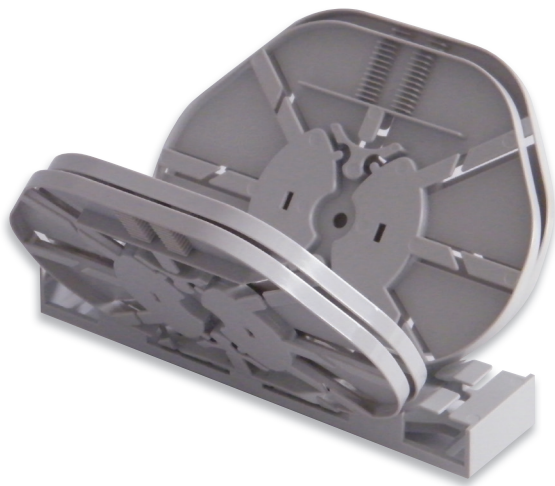


# SAM-*HD* High Density



## High density to increase the fibre capacity into SAM trays

The High Density module allow to increase the fibre capacity in any FOCUS enclosure ensuring the full radius bend and the total control of system fibre management.






The High Density solution include a redesigned shape of the tray with a dedicated area which include an higher capacity of splices.




PARAMETER	FOCUS SAM AND HD
Loop-Back facility	Yes
Material	ABS-PC
Flammability Rating	UL-94 V0
Colour	RAL 7035

High Quality, total modularity and easy installation at any point of the network are the key factors of the FOCUS-SAM-HD family range.

PARAMETER	FOCUS SAM
Minimum fibre bending radius	30 mm
Maximum fibre length storage for each side of splice	(bare fibre) 2,050 mm min (900 µm fibre) 850 mm min
PLC and FBT splitter integration	Yes (on HD4 and HD24 only)
Loop-Back facility	Yes
Material	ABS-PC
Flammability Rating	UL-94 V0
Colour	RAL 7035

# SAM-HD High Density

	Focus SAM - HD	MODULE TYPE	TRAY PER PACK	SPLICE PER TRAY	TOTAL SPLICE PACK
FIBERTERM HOLDER	HD1-24H		1	24	24
	HD2-8H		2	8	16
	HD3-24H		3	24	72
	HD4-12H		4	12	48
	HD6-8H		6	8	48

	Focus SAM - HD	MODULE TYPE	TRAY PER PACK	SPLICE PER TRAY	TOTAL SPLICE PACK
FIBERCLIP HOLDER	HD2-12C		2	12	24
	HD4-12C		4	12	48
	HD6-12C		6	12	72

OPTOTEC PN	REFERENCE PN	DESCRIPTION
2500096	FOCUS-SAM-HD1-24H	High Density Splicing Module - holder for Fiberterm 1x(3x8) splices - 1 HD cassettes - 1x8 mm - WAP 2 base
2500098	FOCUS-SAM-HD2-8H	High Density Splicing Module - holder for Fiberterm 6x8 splices - 2 HD cassettes - 2x4 mm - WAP 2 base
2500088	FOCUS-SAM-HD2-12C	High Density Splicing Module - Fiberclip holder 2x12 splices - 2 HD cassettes - 2x4 mm - WAP 2 base
2500095	FOCUS-SAM-HD3-24H	High Density Splicing Module - holder for Fiberterm 3x(3x8) splices - 3 HD cassettes - 3x8 mm - WAP 6 base
2500091	FOCUS-SAM-HD4-12H	High Density Splicing Module - Fiberterm holder 4x(2x6) splices - 4 HD cassettes - 4x6 mm - WAP 4 base
2500092	FOCUS-SAM-HD4-12C	High Density Splicing Module - Fiberclip holder 4x12 splices - 4 HD cassettes - 4x6 mm - WAP 4 base
2500097	FOCUS-SAM-HD6-8H	High Density Splicing Module - holder for Fiberterm 6x8 splices - 6 HD cassettes - 6x4 mm - WAP 6 base
2500089	FOCUS-SAM-HD6-12C	High Density Splicing Module - Fiberclip holder 6x12 splices - 6 HD cassettes - 6x4 mm - WAP 6 base